



ELECTRONIC COPY

LG741513884
Report verification at igi.org



October 29, 2025
IGI Report Number **LG741513884**
Description **LABORATORY GROWN DIAMOND**
Shape and Cutting Style **SQUARE CUSHION MODIFIED BRILLIANT**
Measurements **6.52 X 6.20 X 4.48 MM**
GRADING RESULTS
Carat Weight **1.53 CARAT**
Color Grade **LIGHT BROWNISH PINK**
Clarity Grade **SI 1**

LABORATORY GROWN DIAMOND REPORT

October 29, 2025
IGI Report Number **LG741513884**
Description **LABORATORY GROWN DIAMOND**
Shape and Cutting Style **SQUARE CUSHION MODIFIED BRILLIANT**
Measurements **6.52 X 6.20 X 4.48 MM**

GRADING RESULTS

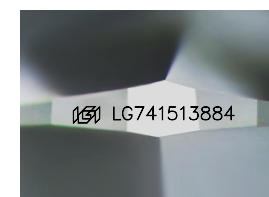
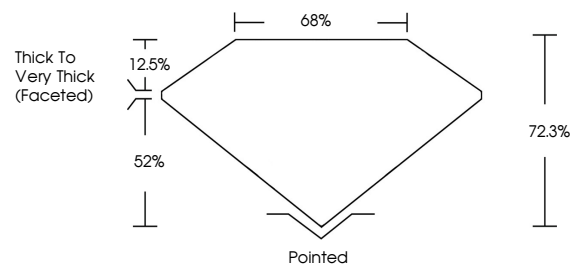
Carat Weight **1.53 CARAT**
Color Grade **LIGHT BROWNISH PINK**
Clarity Grade **SI 1**

ADDITIONAL GRADING INFORMATION

Polish **EXCELLENT**
Symmetry **VERY GOOD**
Fluorescence **VERY SLIGHT**
Inscription(s) **IGI LG741513884**

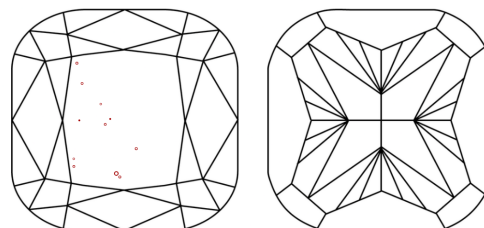
Comments: This Laboratory Grown Diamond was created by Chemical Vapor Deposition (CVD) growth process. Indications of post-growth treatment.

PROPORTIONS



Sample Image Used

CLARITY CHARACTERISTICS



KEY TO SYMBOLS

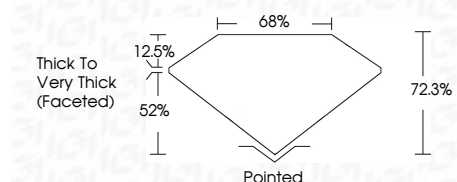
Red symbols indicate internal characteristics.
Green symbols indicate external characteristics.

COLOR

D E F G H I J Faint Very Light Light

CLARITY

FL	IF	VS ¹⁻²	VS ¹⁻²	SI ¹⁻²	I ¹⁻³
Flawless	Internally Flawless	Very Very Slightly Included	Very Slightly Included	Slightly Included	Included



ADDITIONAL GRADING INFORMATION

Polish **EXCELLENT**
Symmetry **VERY GOOD**
Fluorescence **VERY SLIGHT**
Inscription(s) **IGI LG741513884**
Comments: This Laboratory Grown Diamond was created by Chemical Vapor Deposition (CVD) growth process. Indications of post-growth treatment.



October 29, 2025
IGI Report No LG741513884
SQUARE CUSHION MODIFIED BRILLIANT
6.52 X 6.20 X 4.48 MM
1.53 CARAT
Color Grade **LIGHT BROWNISH PINK**
Clarity Grade **SI 1**
Depth **72.3%**
Table **68%**
Girdle **Thick to Very Thick (Faceted)**
Culet **Pointed**
Polish **EXCELLENT**
Symmetry **VERY GOOD**
Fluorescence **VERY SLIGHT**
Inscription(s) **IGI LG741513884**
Comments: This Laboratory Grown Diamond was created by Chemical Vapor Deposition (CVD) growth process. Indications of post-growth treatment.