



ELECTRONIC COPY

LG741512993
Report verification at igi.org



October 13, 2025
IGI Report Number LG741512993
Description LABORATORY GROWN DIAMOND
Shape and Cutting Style SQUARE CUSHION MODIFIED BRILLIANT
Measurements 7.94 X 7.60 X 5.01 MM
GRADING RESULTS
Carat Weight 2.53 CARATS
Color Grade D
Clarity Grade VVS 1

LABORATORY GROWN DIAMOND REPORT

October 13, 2025
IGI Report Number LG741512993
Description LABORATORY GROWN DIAMOND
Shape and Cutting Style SQUARE CUSHION MODIFIED BRILLIANT
Measurements 7.94 X 7.60 X 5.01 MM

GRADING RESULTS

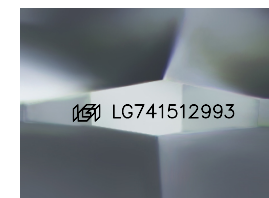
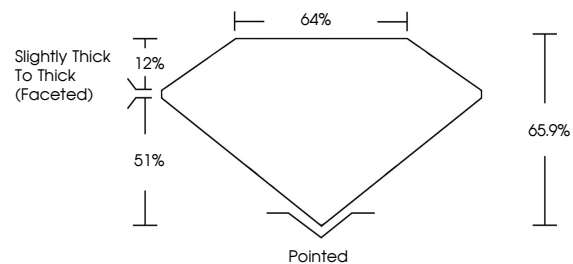
Carat Weight 2.53 CARATS
Color Grade D
Clarity Grade VVS 1

ADDITIONAL GRADING INFORMATION

Polish EXCELLENT
Symmetry EXCELLENT
Fluorescence NONE
Inscription(s) LG741512993

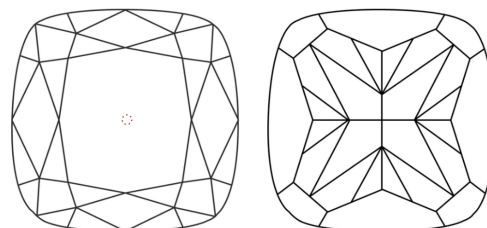
Comments: As Grown - No indication of post-growth treatment.
This Laboratory Grown Diamond was created by High Pressure High Temperature (HPHT) growth process.
Type II

PROPORTIONS



Sample Image Used

CLARITY CHARACTERISTICS



KEY TO SYMBOLS

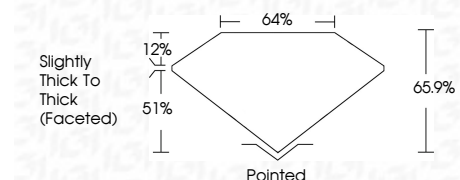
Red symbols indicate internal characteristics.
Green symbols indicate external characteristics.

COLOR

D E F G H I J Faint Very Light Light

CLARITY

Table with columns: FL, IF, VVS 1-2, VS 1-2, SI 1-2, I 1-3 and corresponding descriptions: Flawless, Internally Flawless, Very Very Slightly Included, Very Slightly Included, Slightly Included, Included



ADDITIONAL GRADING INFORMATION

Polish EXCELLENT
Symmetry EXCELLENT
Fluorescence NONE
Inscription(s) LG741512993
Comments: As Grown - No indication of post-growth treatment.
This Laboratory Grown Diamond was created by High Pressure High Temperature (HPHT) growth process.
Type II



October 13, 2025
IGI Report No LG741512993
SQUARE CUSHION MODIFIED BRILLIANT
7.94 X 7.60 X 5.01 MM
2.53 CARATS
D
2.53 CARATS
D
VVS 1
65.9%
64%
Slightly Thick To Thick (Faceted)
Pointed
EXCELLENT
EXCELLENT
NONE
LG741512993
Comments: As Grown - No indication of post-growth treatment.
This Laboratory Grown Diamond was created by High Pressure High Temperature (HPHT) growth process.
Type II