



ELECTRONIC COPY

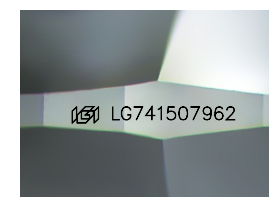
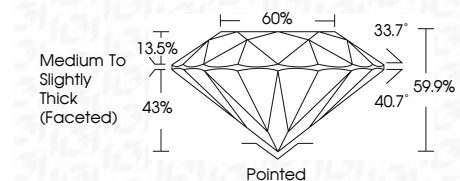
LG741507962
Report verification at igi.org



October 16, 2025
IGI Report Number LG741507962
Description LABORATORY GROWN DIAMOND
Shape and Cutting Style ROUND BRILLIANT
Measurements 9.09 - 9.11 X 5.45 MM

GRADING RESULTS

Carat Weight 2.78 CARATS
Color Grade E
Clarity Grade VVS 2
Cut Grade IDEAL



Sample Image Used

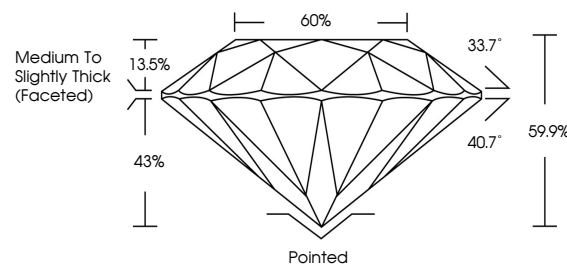
ADDITIONAL GRADING INFORMATION

Polish EXCELLENT
Symmetry EXCELLENT
Fluorescence NONE
Inscription(s) LG741507962
Comments: This Laboratory Grown Diamond was created by Chemical Vapor Deposition (CVD) growth process. Type IIa

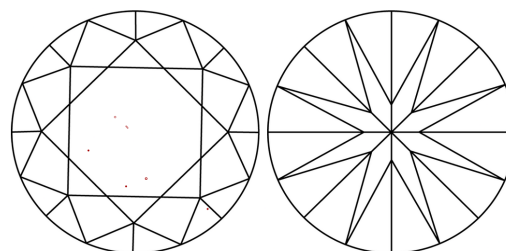


October 16, 2025
IGI Report No LG741507962
ROUND BRILLIANT
2.78 CARATS E
9.09 - 9.11 X 5.45 MM
VVS 2 IDEAL
59.9% 60%
Medium To Slightly Thick (Faceted)
Pointed EXCELLENT
Polish EXCELLENT
Symmetry EXCELLENT
Fluorescence NONE
Inscription(s) LG741507962
Comments: This Laboratory Grown Diamond was created by Chemical Vapor Deposition (CVD) growth process. Type IIa

PROPORTIONS



CLARITY CHARACTERISTICS



KEY TO SYMBOLS

Red symbols indicate internal characteristics.
Green symbols indicate external characteristics.

COLOR

D E F G H I J Faint Very Light Light

CLARITY

FL IF VVS 1-2 VS 1-2 SI 1-2 I 1-3
Flawless Internally Flawless Very Very Slightly Included Very Slightly Included Slightly Included Included

