



ELECTRONIC COPY

LG741507892
Report verification at igi.org



October 17, 2025

IGI Report Number **LG741507892**

Description **LABORATORY GROWN DIAMOND**

Shape and Cutting Style **ROUND BRILLIANT**

Measurements **8.31 - 8.35 X 5.20 MM**

GRADING RESULTS

Carat Weight **2.27 CARATS**

Color Grade **D**

Clarity Grade **VVS 2**

Cut Grade **EXCELLENT**

October 17, 2025

IGI Report Number **LG741507892**

Description **LABORATORY GROWN DIAMOND**

Shape and Cutting Style **ROUND BRILLIANT**

Measurements **8.31 - 8.35 X 5.20 MM**

GRADING RESULTS

Carat Weight **2.27 CARATS**

Color Grade **D**

Clarity Grade **VVS 2**

Cut Grade **EXCELLENT**

ADDITIONAL GRADING INFORMATION

Polish **EXCELLENT**

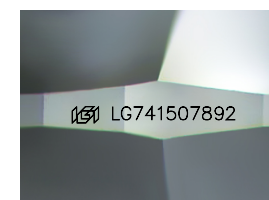
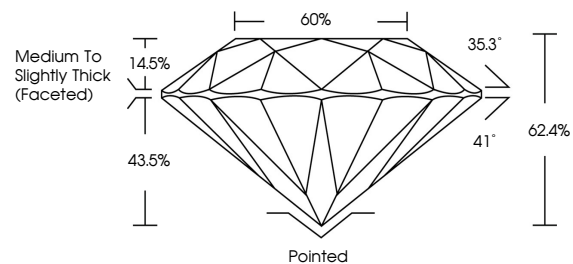
Symmetry **EXCELLENT**

Fluorescence **NONE**

Inscription(s) **LG741507892**

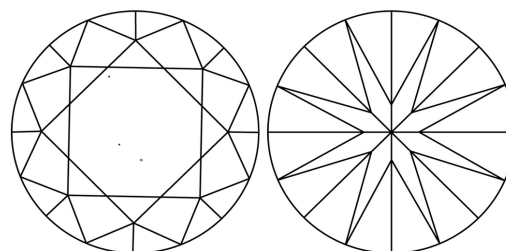
Comments: This Laboratory Grown Diamond was created by Chemical Vapor Deposition (CVD) growth process. Type IIa

PROPORTIONS



Sample Image Used

CLARITY CHARACTERISTICS



KEY TO SYMBOLS

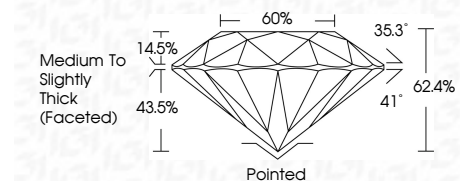
Red symbols indicate internal characteristics.
Green symbols indicate external characteristics.

COLOR

D E F G H I J Faint Very Light Light

CLARITY

FL	IF	VVS ¹⁻²	VS ¹⁻²	SI ¹⁻²	I ¹⁻³
Flawless	Internally Flawless	Very Very Slightly Included	Very Slightly Included	Slightly Included	Included



ADDITIONAL GRADING INFORMATION

Polish **EXCELLENT**

Symmetry **EXCELLENT**

Fluorescence **NONE**

Inscription(s) **LG741507892**

Comments: This Laboratory Grown Diamond was created by Chemical Vapor Deposition (CVD) growth process. Type IIa



IGI



October 17, 2025
IGI Report No LG741507892
ROUND BRILLIANT

8.31 - 8.35 X 5.20 MM
2.27 CARATS
D
VVS 2
EXCELLENT
62.4%
60%
Medium To Slightly Thick (Faceted)

Pointed
EXCELLENT
EXCELLENT
NONE
NONE
#69 LG741507892

Cutlet
Polish
Symmetry
Fluorescence
Inscriptions(s)

Comments: This Laboratory Grown Diamond was created by Chemical Vapor Deposition (CVD) growth process. Type IIa