



**INTERNATIONAL  
GEMOLOGICAL  
INSTITUTE**

**ELECTRONIC COPY**

**LABORATORY GROWN DIAMOND REPORT**

October 14, 2025  
 IGI Report Number **LG741505877**  
 Description **LABORATORY GROWN DIAMOND**  
 Shape and Cutting Style **SQUARE CUSHION MODIFIED BRILLIANT**  
 Measurements **5.00 X 5.00 X 3.30 MM**

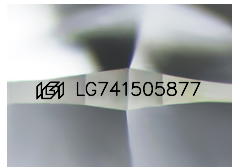
**GRADING RESULTS**

Carat Weight **0.67 CARAT**  
 Color Grade **FANCY VIVID BLUE**  
 Clarity Grade **VVS 2**

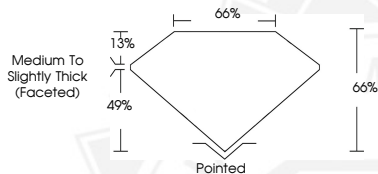
**ADDITIONAL GRADING INFORMATION**

Polish **VERY GOOD**  
 Symmetry **VERY GOOD**  
 Fluorescence **NONE**  
 Inscription(s) **IGI LG741505877**

Comments: This Laboratory Grown Diamond was created by Chemical Vapor Deposition (CVD) growth process. Indications of post-growth treatment.



Sample Image Used



October 14, 2025  
 IGI Report Number **LG741505877**  
**SQUARE CUSHION MODIFIED  
BRILLIANT**  
**LABORATORY GROWN DIAMOND**  
**5.00 X 5.00 X 3.30 MM**  
 Carat Weight **0.67 CARAT**  
 Color Grade **FANCY VIVID BLUE**  
 Clarity Grade **VVS 2**  
 Polish **VERY GOOD**  
 Symmetry **VERY GOOD**  
 Fluorescence **NONE**  
 Inscription(s) **IGI LG741505877**

Comments: This Laboratory Grown Diamond was created by Chemical Vapor Deposition (CVD) growth process. Indications of post-growth treatment.



October 14, 2025  
 IGI Report Number **LG741505877**  
**SQUARE CUSHION MODIFIED  
BRILLIANT**  
**LABORATORY GROWN DIAMOND**  
**5.00 X 5.00 X 3.30 MM**  
 Carat Weight **0.67 CARAT**  
 Color Grade **FANCY VIVID BLUE**  
 Clarity Grade **VVS 2**  
 Polish **VERY GOOD**  
 Symmetry **VERY GOOD**  
 Fluorescence **NONE**  
 Inscription(s) **IGI LG741505877**

Comments: This Laboratory Grown Diamond was created by Chemical Vapor Deposition (CVD) growth process. Indications of post-growth treatment.



THIS DOCUMENT WAS PRODUCED WITH THE FOLLOWING SECURITY MEASURES: SPECIAL DOCUMENT PAPER, INK SCREENS, WATERMARK, BACKGROUND DESIGNS, HOLOGRAM AND OTHER SECURITY FEATURES NOT LISTED AND DO EXCEED DOCUMENT SECURITY INDUSTRY GUIDELINES.

For terms & conditions and to verify this report, please visit [www.igi.org](http://www.igi.org)