



ELECTRONIC COPY

LABORATORY GROWN DIAMOND REPORT

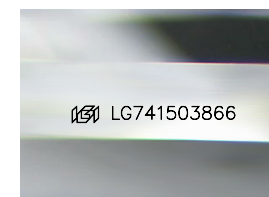
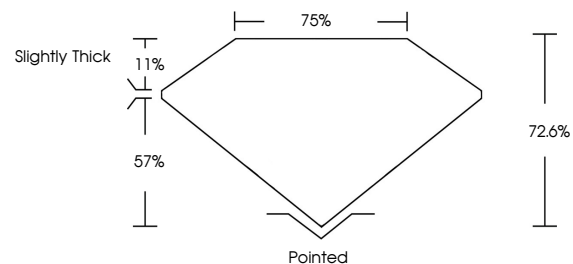
October 7, 2025
 IGI Report Number **LG741503866**
 Description **LABORATORY GROWN DIAMOND**
 Shape and Cutting Style **PRINCESS CUT**
 Measurements **9.13 X 8.79 X 6.38 MM**
GRADING RESULTS
 Carat Weight **4.60 CARATS**
 Color Grade **E**
 Clarity Grade **VVS 2**

ADDITIONAL GRADING INFORMATION

Polish **EXCELLENT**
 Symmetry **EXCELLENT**
 Fluorescence **NONE**
 Inscription(s) **LG741503866**

Comments: This Laboratory Grown Diamond was created by Chemical Vapor Deposition (CVD) growth process.
 Type IIa

PROPORTIONS



Sample Image Used

COLOR

D E F G H I J Faint Very Light Light

CLARITY

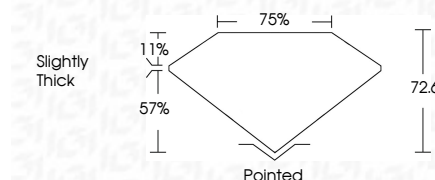
FL	IF	VS ¹⁻²	VS ¹⁻²	SI ¹⁻²	I ¹⁻³
Flawless	Internally Flawless	Very Very Slightly Included	Very Slightly Included	Slightly Included	Included



October 7, 2025
 IGI Report Number **LG741503866**
 Description **LABORATORY GROWN DIAMOND**
 Shape and Cutting Style **PRINCESS CUT**
 Measurements **9.13 X 8.79 X 6.38 MM**
GRADING RESULTS
 Carat Weight **4.60 CARATS**
 Color Grade **E**
 Clarity Grade **VVS 2**

ADDITIONAL GRADING INFORMATION

Polish **EXCELLENT**
 Symmetry **EXCELLENT**
 Fluorescence **NONE**
 Inscription(s) **LG741503866**
 Comments: This Laboratory Grown Diamond was created by Chemical Vapor Deposition (CVD) growth process.
 Type IIa



IGI



October 7, 2025
 IGI Report No LG741503866
PRINCESS CUT
 9.13 X 8.79 X 6.38 MM
 Carat Weight **4.60 CARATS**
 Color Grade **E**
 Clarity Grade **VVS 2**
 Depth **72.6%**
 Table **75%**
 Girdle **Slightly Thick**
 Culet **Pointed**
 Polish **EXCELLENT**
 Symmetry **EXCELLENT**
 Fluorescence **NONE**
 Inscription(s) **LG741503866**

Comments: This Laboratory Grown Diamond was created by Chemical Vapor Deposition (CVD) growth process.
 Type IIa