



ELECTRONIC COPY

LABORATORY GROWN DIAMOND REPORT

October 6, 2025	
IGI Report Number	LG741503560
Description	LABORATORY GROWN DIAMOND
Shape and Cutting Style	PRINCESS CUT
Measurements	7.58 X 7.39 X 5.22 MM

GRADING RESULTS

Carat Weight	2.53 CARATS
Color Grade	E
Clarity Grade	VVS 2

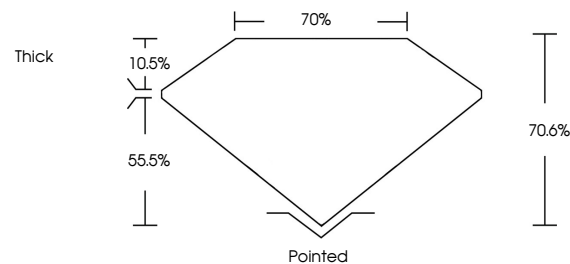
ADDITIONAL GRADING INFORMATION

Polish	EXCELLENT
Symmetry	EXCELLENT
Fluorescence	NONE
Inscription(s)	 LG741503560

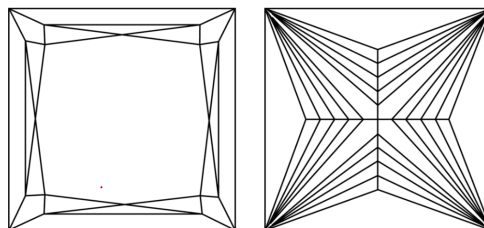
Comments: This Laboratory Grown Diamond was created by Chemical Vapor Deposition (CVD) growth process.
Type IIa

LG741503560
Report verification at igi.org

PROPORTIONS

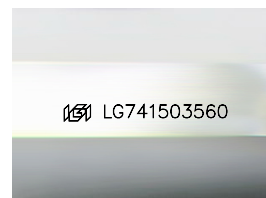


CLARITY CHARACTERISTICS



KEY TO SYMBOLS

Red symbols indicate internal characteristics.
Green symbols indicate external characteristics.



Sample Image Used

COLOR

D E F G H I J Faint Very Light Light

CLARITY

FL	IF	VVS ¹⁻²	VS ¹⁻²	SI ¹⁻²	I ¹⁻³
Flawless	Internally Flawless	Very Very Slightly Included	Very Slightly Included	Slightly Included	Included

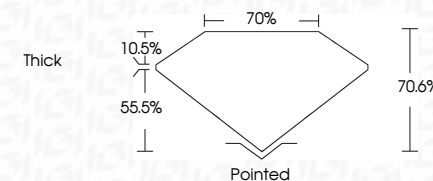
LABORATORY GROWN DIAMOND REPORT



October 6, 2025	
IGI Report Number	LG741503560
Description	LABORATORY GROWN DIAMOND
Shape and Cutting Style	PRINCESS CUT
Measurements	7.58 X 7.39 X 5.22 MM

GRADING RESULTS

Carat Weight	2.53 CARATS
Color Grade	E
Clarity Grade	VVS 2



ADDITIONAL GRADING INFORMATION

Polish	EXCELLENT
Symmetry	EXCELLENT
Fluorescence	NONE
Inscription(s)	151 LG741503560
<p>Comments: This Laboratory Grown Diamond was created by Chemical Vapor Deposition (CVD) growth process.</p> <p>Type IIa</p>	



© IGI 2020, International Gemological Institute

FD - 10 20



THIS DOCUMENT WAS PRODUCED WITH THE FOLLOWING SECURITY MEASURES: SPECIAL DOCUMENT PAPER, INK SCREENS, WATERMARK, BACKGROUND DESIGNS, HOLOGRAM AND OTHER SECURITY FEATURES NOT LISTED AND DO EXCEED DOCUMENT SECURITY INDUSTRY GUIDELINES

October 6, 2025
IGI Report No LG741503560
PRINCESS CIT

7.58 X 7.39 X 5.22 MM	Carat Weight	2.58 CARATS
	Color Grade	E
	Clarity Grade	VVS 2
	Depth	70.6%
	Table	70%
	Girdle	Thick
	Culet	Pointed
	Polish	EXCELLENT
	Symmetry	EXCELLENT
	Fluorescence	NONE
	Annotations(s)	see 12741703590

Comments:
This Laboratory Grown Diamond was created by Chemical Vapor Deposition (CVD) growth process.

www.igi.org