



**ELECTRONIC COPY**

LG740508059  
Report verification at igi.org



October 6, 2025

IGI Report Number **LG740508059**

Description **LABORATORY GROWN DIAMOND**

Shape and Cutting Style **ROUND BRILLIANT**

Measurements **9.78 - 9.84 X 6.04 MM**

**GRADING RESULTS**

Carat Weight **3.59 CARATS**

Color Grade **F**

Clarity Grade **VVS 2**

Cut Grade **IDEAL**

October 6, 2025  
IGI Report Number **LG740508059**  
Description **LABORATORY GROWN DIAMOND**  
Shape and Cutting Style **ROUND BRILLIANT**  
Measurements **9.78 - 9.84 X 6.04 MM**

**GRADING RESULTS**

Carat Weight **3.59 CARATS**

Color Grade **F**

Clarity Grade **VVS 2**

Cut Grade **IDEAL**

**ADDITIONAL GRADING INFORMATION**

Polish **EXCELLENT**

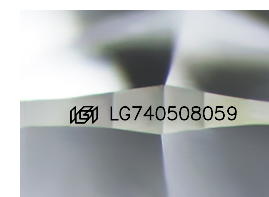
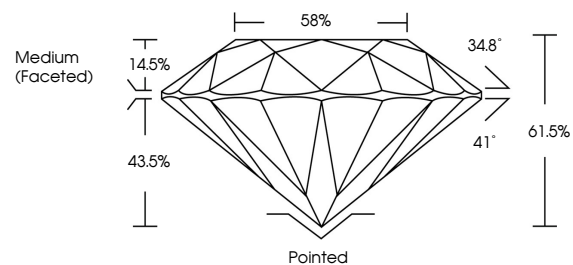
Symmetry **EXCELLENT**

Fluorescence **NONE**

Inscription(s) **LG740508059**

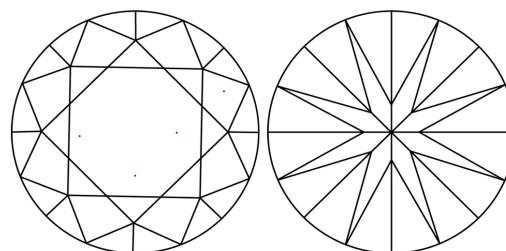
Comments: This Laboratory Grown Diamond was created by Chemical Vapor Deposition (CVD) growth process.  
Type IIa

**PROPORTIONS**



Sample Image Used

**CLARITY CHARACTERISTICS**



**KEY TO SYMBOLS**

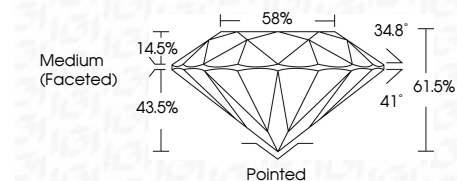
Red symbols indicate internal characteristics.  
Green symbols indicate external characteristics.

**COLOR**

D E F G H I J Faint Very Light Light

**CLARITY**

FL	IF	VVS <sup>1-2</sup>	VS <sup>1-2</sup>	SI <sup>1-2</sup>	I <sup>1-3</sup>
Flawless	Internally Flawless	Very Very Slightly Included	Very Slightly Included	Slightly Included	Included



**ADDITIONAL GRADING INFORMATION**

Polish **EXCELLENT**

Symmetry **EXCELLENT**

Fluorescence **NONE**

Inscription(s) **LG740508059**

Comments: This Laboratory Grown Diamond was created by Chemical Vapor Deposition (CVD) growth process.  
Type IIa



**IGI**



October 6, 2025	IGI Report No <b>LG740508059</b>	<b>3.59 CARATS</b>	<b>F</b>	<b>Pointed</b>
<b>ROUND BRILLIANT</b>	<b>9.78 - 9.84 X 6.04 MM</b>	<b>VVS 2</b>	<b>IDEAL</b>	<b>EXCELLENT</b>
Carat Weight	Color Grade	Clarity Grade	Depth	Symmetry
3.59	F	VVS 2	61.5%	EXCELLENT
	Cut Grade	Table	Girdle	Fluorescence
	IDEAL	61.5%	85%	NONE
				Inscription(s)
				LG740508059
				Comments: This Laboratory Grown Diamond was created by Chemical Vapor Deposition (CVD) growth process. Type IIa