



INTERNATIONAL GEMOLOGICAL INSTITUTE

ELECTRONIC COPY



October 9, 2025

IGI Report Number **LG740506274**

ROUND BRILLIANT

LABORATORY GROWN DIAMOND

5.85 - 5.89 X 3.42 MM

Carat Weight **0.74 CARAT**

Color Grade **D**

Clarity Grade **VS 2**

Cut Grade **FAIR**

Polish **VERY GOOD**

Symmetry **VERY GOOD**

Fluorescence **NONE**

Inscription(s) **IGI LG740506274**

Comments: This Laboratory Grown Diamond was created by Chemical Vapor Deposition (CVD) growth process. Type IIa

LABORATORY GROWN DIAMOND REPORT

October 9, 2025

IGI Report Number

LG740506274

Description

LABORATORY GROWN DIAMOND

Shape and Cutting Style

ROUND BRILLIANT

Measurements

5.85 - 5.89 X 3.42 MM

GRADING RESULTS

Carat Weight

0.74 CARAT

Color Grade

D

Clarity Grade

VS 2

Cut Grade

FAIR

ADDITIONAL GRADING INFORMATION

Polish

VERY GOOD

Symmetry

VERY GOOD

Fluorescence

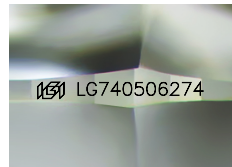
NONE

Inscription(s)

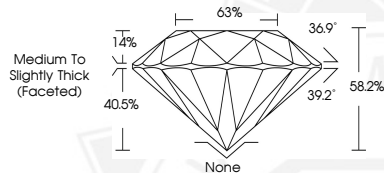
IGI LG740506274

Comments: This Laboratory Grown Diamond was created by Chemical Vapor Deposition (CVD) growth process.

Type IIa



Sample Image Used



October 9, 2025

IGI Report Number **LG740506274**

ROUND BRILLIANT

LABORATORY GROWN DIAMOND

5.85 - 5.89 X 3.42 MM

Carat Weight **0.74 CARAT**

Color Grade **D**

Clarity Grade **VS 2**

Cut Grade **FAIR**

Polish **VERY GOOD**

Symmetry **VERY GOOD**

Fluorescence **NONE**

Inscription(s) **IGI LG740506274**

Comments: This Laboratory Grown Diamond was created by Chemical Vapor Deposition (CVD) growth process. Type IIa



THIS DOCUMENT WAS PRODUCED WITH THE FOLLOWING SECURITY MEASURES: SPECIAL DOCUMENT PAPER, INK SCREENS, WATERMARK, BACKGROUND DESIGNS, HOLOGRAM AND OTHER SECURITY FEATURES NOT LISTED AND DO EXCEED DOCUMENT SECURITY INDUSTRY GUIDELINES.

For terms & conditions and to verify this report, please visit www.igi.org