



ELECTRONIC COPY

LG740505045
Report verification at igi.org



October 11, 2025

IGI Report Number **LG740505045**

Description **LABORATORY GROWN DIAMOND**

Shape and Cutting Style **CUT CORNERED
RECTANGULAR MODIFIED
BRILLIANT**

Measurements **9.63 X 6.60 X 4.31 MM**

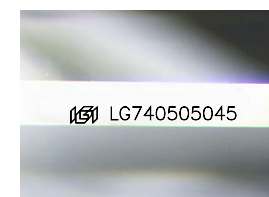
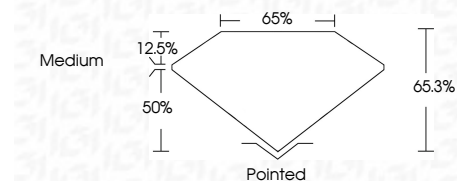
GRADING RESULTS

Carat Weight **2.22 CARATS**

Color Grade **D**

Clarity Grade **INTERNALLY FLAWLESS**

Cut Grade **EXCELLENT**



Sample Image Used

ADDITIONAL GRADING INFORMATION

Polish **EXCELLENT**

Symmetry **EXCELLENT**

Fluorescence **NONE**

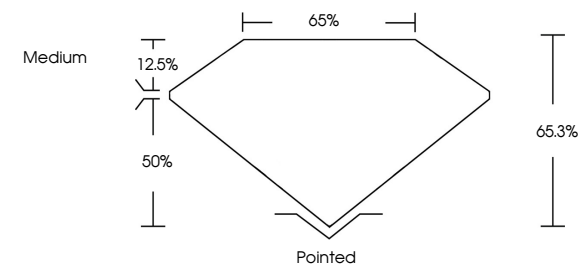
Inscription(s) **IGI LG740505045**

Comments: As Grown - No indication of post-growth treatment.

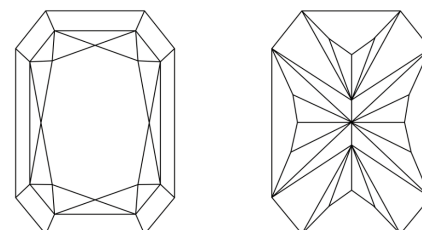
This Laboratory Grown Diamond was created by High Pressure High Temperature (HPHT) growth process. Type II



PROPORTIONS



CLARITY CHARACTERISTICS



KEY TO SYMBOLS

Red symbols indicate internal characteristics.
Green symbols indicate external characteristics.

COLOR

D E F G H I J Faint Very Light Light

CLARITY

FL	IF	VS ¹⁻²	VS ¹⁻²	SI ¹⁻²	I ¹⁻³
Flawless	Internally Flawless	Very Very Slightly Included	Very Slightly Included	Slightly Included	Included

October 11, 2025
IGI Report No LG740505045
CUT CORNERED RECT. MODIFIED BRILLIANT
9.63 X 6.60 X 4.31 MM
2.22 CARATS
Color Grade D
Clarity Grade EXCELLENT
Depth 65.3%
Table 50%
Girdle Medium
Culet Pointed
Polish EXCELLENT
Symmetry EXCELLENT
Fluorescence NONE
Inscription(s) IGI LG740505045
Comments: As Grown - No indication of post-growth treatment. This Laboratory Grown Diamond was created by High Pressure High Temperature (HPHT) growth process. Type II