



October 8, 2025

**IGI Report Number** LG740504275  
**CUT CORNERED RECTANGULAR  
MODIFIED BRILLIANT  
LABORATORY GROWN DIAMOND**  
**5.60 X 3.98 X 2.71 MM**

**Carat Weight** 0.50 CARAT  
**Color Grade** D  
**Clarity Grade** I.F.  
**Polish** EXCELLENT  
**Symmetry** EXCELLENT  
**Fluorescence** NONE  
**Inscription(s)** (IGI) LG740504275

Comments: As Grown - No indication of post-growth treatment. This Laboratory Grown Diamond was created by High Pressure High Temperature (HPHT) growth process. Type II

**LABORATORY GROWN DIAMOND REPORT**

October 8, 2025  
IGI Report Number **LG740504275**  
Description **LABORATORY GROWN DIAMOND**  
Shape and Cutting Style **CUT CORNERED RECTANGULAR MODIFIED  
BRILLIANT**  
Measurements **5.60 X 3.98 X 2.71 MM**

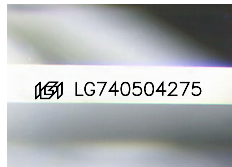
**GRADING RESULTS**

**Carat Weight** 0.50 CARAT  
**Color Grade** D  
**Clarity Grade** INTERNALLY FLAWLESS

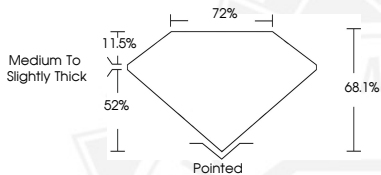
**ADDITIONAL GRADING INFORMATION**

**Polish** EXCELLENT  
**Symmetry** EXCELLENT  
**Fluorescence** NONE  
**Inscription(s)** (IGI) LG740504275

Comments: As Grown - No indication of post-growth treatment. This Laboratory Grown Diamond was created by High Pressure High Temperature (HPHT) growth process. Type II



Sample Image Used



October 8, 2025

**IGI Report Number** LG740504275  
**CUT CORNERED RECTANGULAR  
MODIFIED BRILLIANT  
LABORATORY GROWN DIAMOND**  
**5.60 X 3.98 X 2.71 MM**

**Carat Weight** 0.50 CARAT  
**Color Grade** D  
**Clarity Grade** I.F.  
**Polish** EXCELLENT  
**Symmetry** EXCELLENT  
**Fluorescence** NONE  
**Inscription(s)** (IGI) LG740504275

Comments: As Grown - No indication of post-growth treatment. This Laboratory Grown Diamond was created by High Pressure High Temperature (HPHT) growth process. Type II



THIS DOCUMENT WAS PRODUCED WITH THE FOLLOWING SECURITY MEASURES: SPECIAL DOCUMENT PAPER, INK SCREENS, WATERMARK, BACKGROUND DESIGNS, HOLOGRAM AND OTHER SECURITY FEATURES NOT LISTED AND DO EXCEED DOCUMENT SECURITY INDUSTRY GUIDELINES.