



**INTERNATIONAL
GEMOLOGICAL
INSTITUTE**

ELECTRONIC COPY

LG740501515
Report verification at igi.org

LABORATORY GROWN DIAMOND REPORT



October 5, 2025

IGI Report Number **LG740501515**

Description	LABORATORY GROWN DIAMOND
-------------	--------------------------

Shape and Cutting Style **SQUARE CUSHION MODIFIED
BRILLIANT**

Measurements **8.38 X 8.37 X 5.65 MM**

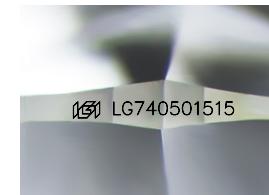
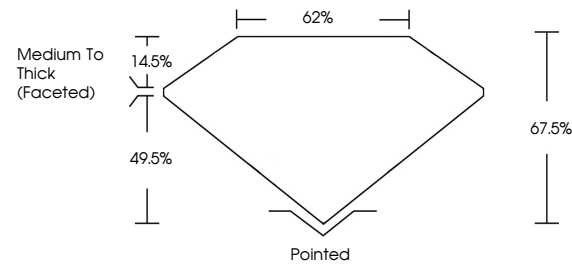
GRADING RESULTS

Carat Weight **3.03 CARATS**

Color Grade **E**

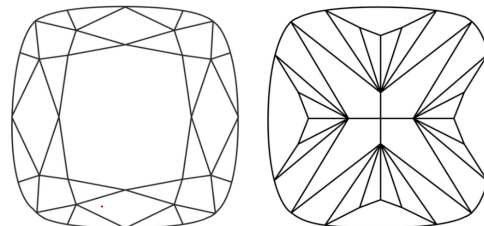
Clarity Grade **VS 2**

PROPORTIONS



Sample Image Used

CLARITY CHARACTERISTICS



KEY TO SYMBOLS

Red symbols indicate internal characteristics.
Green symbols indicate external characteristics.

COLOR

D E F G H I J Faint Very Light Light

CLARITY

FL IF WS¹⁻² VS¹⁻² S¹⁻² |¹⁻³

Flawless	Internally Flawless	Very Slightly Included	Very Slightly Included	Slightly Included	Included
----------	---------------------	------------------------	------------------------	-------------------	----------

ADDITIONAL GRADING INFORMATION

Polish **EXCELLENT**Symmetry **EXCELLENT**Fluorescence **NONE**Inscription(s)  LG740501515

Comments: This Laboratory Grown Diamond was created by Chemical Vapor Deposition (CVD) growth process.
Type IIa



IGI



© IGI 2020, International Gemological Institute

FD - 10 20

www.igi.org

THIS DOCUMENT WAS PRODUCED WITH THE FOLLOWING SECURITY MEASURES: SPECIAL DOCUMENT PAPER, INK SCREENS, WATERMARK, BACKGROUND DESIGNS, HOLOGRAM AND OTHER SECURITY FEATURES NOT LISTED AND DO EXCEED DOCUMENT SECURITY INDUSTRY GUIDELINES

October 5, 2025		G1 Report No. LG740601615		3.03 CARATS	
ESQUEAU CUSHION MODIFIED BRILLIANT		Color Grade		E	
3.38 X 8.37 X 5.65 MM		Clarity Grade		VS 2	
		Depth		67.5%	
		Table		62%	
		Medium to Thick Faceted			
		Culet		Patched	
		Polish		EXCELLENT	
		Symmetry		EXCELLENT	
		Fluorescence		NONE	
		Inscriptions(s)		689 LG740601615	
		Comments:			
		This Laboratory Grown Diamond was created by Chemical Vapor Deposition (CVD) growth process.			
		Type IIa			