



ELECTRONIC COPY

LG739597274
Report verification at igi.org



October 8, 2025

IGI Report Number **LG739597274**

Description **LABORATORY GROWN DIAMOND**

Shape and Cutting Style **OVAL BRILLIANT**

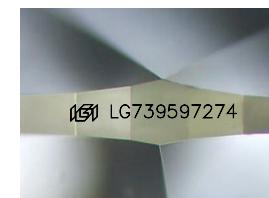
Measurements **10.84 X 7.69 X 4.76 MM**

GRADING RESULTS

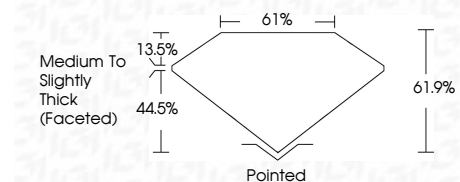
Carat Weight **2.52 CARATS**

Color Grade **D**

Clarity Grade **VS 2**



Sample Image Used



ADDITIONAL GRADING INFORMATION

Polish **EXCELLENT**

Symmetry **EXCELLENT**

Fluorescence **NONE**

Inscription(s) **IGI LG739597274**

Comments: This Laboratory Grown Diamond was created by Chemical Vapor Deposition (CVD) growth process. Type IIa



IGI

October 8, 2025	IGI Report No LG739597274	2.52 CARATS	D	VS 2	61%	61%	Medium to Slightly Thick (Faceted)	Pointed	EXCELLENT	EXCELLENT	NONE	IGI LG739597274
OVAL BRILLIANT	10.84 X 7.69 X 4.76 MM	Carat Weight	Color Grade	Clarity Grade	Table	Girdle		Culet	Polish	Symmetry	Fluorescence	Inscription(s)

Comments: This Laboratory Grown Diamond was created by Chemical Vapor Deposition (CVD) growth process. Type IIa

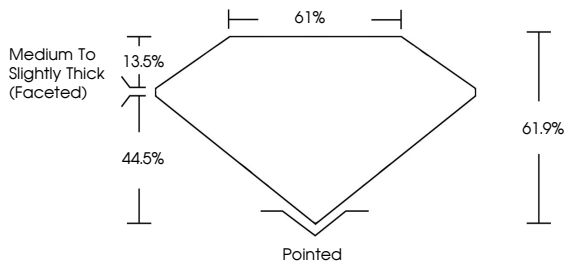
October 8, 2025
IGI Report Number **LG739597274**
Description **LABORATORY GROWN DIAMOND**
Shape and Cutting Style **OVAL BRILLIANT**
Measurements **10.84 X 7.69 X 4.76 MM**

GRADING RESULTS
Carat Weight **2.52 CARATS**
Color Grade **D**
Clarity Grade **VS 2**

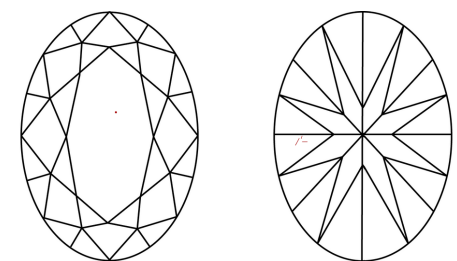
ADDITIONAL GRADING INFORMATION
Polish **EXCELLENT**
Symmetry **EXCELLENT**
Fluorescence **NONE**
Inscription(s) **IGI LG739597274**

Comments: This Laboratory Grown Diamond was created by Chemical Vapor Deposition (CVD) growth process. Type IIa

PROPORTIONS



CLARITY CHARACTERISTICS



KEY TO SYMBOLS
Red symbols indicate internal characteristics.
Green symbols indicate external characteristics.

COLOR

D	E	F	G	H	I	J	Faint	Very Light	Light
---	---	---	---	---	---	---	-------	------------	-------

CLARITY

FL	IF	VS ¹⁻²	VS ¹⁻²	SI ¹⁻²	I ¹⁻³
Flawless	Internally Flawless	Very Very Slightly Included	Very Slightly Included	Slightly Included	Included

