



**ELECTRONIC COPY**

## LABORATORY GROWN DIAMOND REPORT

October 7, 2025	
IGI Report Number	LG739595909
Description	LABORATORY GROWN DIAMOND
Shape and Cutting Style	CUT CORNERED SQUARE MODIFIED BRILLIANT
Measurements	7.93 X 7.77 X 5.33 MM

## GRADING RESULTS

Carat Weight	3.03 CARATS
Color Grade	E
Clarity Grade	VVS 2

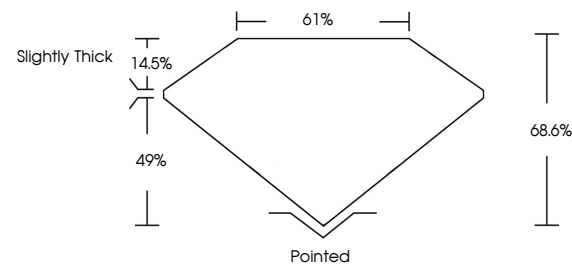
### ADDITIONAL GRADING INFORMATION

Polish	EXCELLENT
Symmetry	EXCELLENT
Fluorescence	NONE
Inscription(s)	 LG739595909

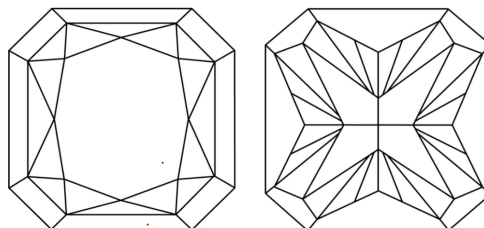
Comments: This Laboratory Grown Diamond was created by Chemical Vapor Deposition (CVD) growth process.  
Type IIa

LG739595909  
Report verification at [igi.org](https://igi.org)

## PROPORTIONS

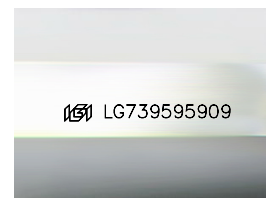


## CLARITY CHARACTERISTICS



## KEY TO SYMBOLS

Red symbols indicate internal characteristics.  
Green symbols indicate external characteristics.



Sample Image Used

## COLOR

D E F G H I J Faint Very Light Light

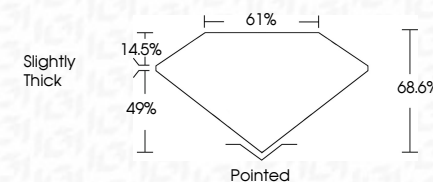
## CLARITY

FL	IF	VVS <sup>1-2</sup>	VS <sup>1-2</sup>	SI <sup>1-2</sup>	I <sup>1-3</sup>
Flawless	Internally Flawless	Very Very Slightly Included	Very Slightly Included	Slightly Included	Included

## LABORATORY GROWN DIAMOND REPORT



October 7, 2025	
IGI Report Number	LG739595909
Description	LABORATORY GROWN DIAMOND
Shape and Cutting Style	CUT CORNERED SQUARE MODIFIED BRILLIANT
Measurements	7.93 X 7.77 X 5.33 MM
GRADING RESULTS	
Carat Weight	3.03 CARATS
Color Grade	E
Clarity Grade	VVS 2



### ADDITIONAL GRADING INFORMATION

Polish	EXCELLENT
Symmetry	EXCELLENT
Fluorescence	NONE
Inscription(s)	<del>(G)</del> LG739595909
Comments: This Laboratory Grown Diamond was created by Chemical Vapor Deposition (CVD) growth process.	
Type IIa	



© IGI 2020, International Gemological Institute

FD - 10 20



THIS DOCUMENT WAS PRODUCED WITH THE FOLLOWING SECURITY MEASURES: SPECIAL DOCUMENT PAPER, INK SCREENS, WATERMARK, BACKGROUND DESIGNS, HOLOGRAM AND OTHER SECURITY FEATURES NOT LISTED AND DO EXCEED DOCUMENT SECURITY INDUSTRY GUIDELINE

**www.igi.org**

October 7, 2025	GI Report Num LG73956909	3.03 CARATS
	GI REPORT NAME: MODIFIED	
	BRILLIANT	
	9.98 X 7.77 X 5.33 MM	
Carat Weight	Color Grade	E
Clarity Grade	Fluorescence	None
Depth	Symmetry	Excellent
Table	Polish	Excellent
Grain	Inscriptions(s)	None
	Weight	9.98 LG73956909
	Comments:	
		Chemical Vapor Deposition
		CVD growth process.
		Type IIa