



**ELECTRONIC COPY**

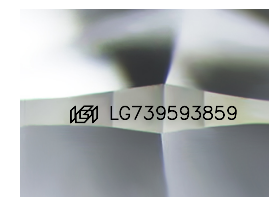
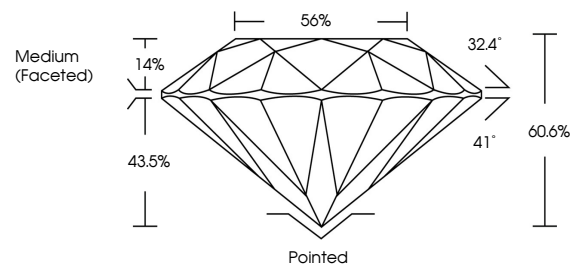
LG739593859  
Report verification at igi.org



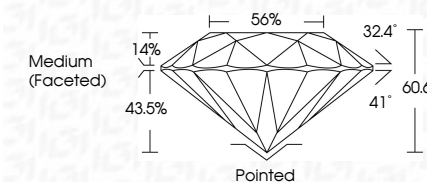
October 6, 2025  
IGI Report Number **LG739593859**  
Description **LABORATORY GROWN DIAMOND**  
Shape and Cutting Style **ROUND BRILLIANT**  
Measurements **11.06 - 11.11 X 6.72 MM**  
**GRADING RESULTS**  
Carat Weight **5.02 CARATS**  
Color Grade **F**  
Clarity Grade **VVS 2**  
Cut Grade **EXCELLENT**

October 6, 2025  
IGI Report Number **LG739593859**  
Description **LABORATORY GROWN DIAMOND**  
Shape and Cutting Style **ROUND BRILLIANT**  
Measurements **11.06 - 11.11 X 6.72 MM**  
**GRADING RESULTS**  
Carat Weight **5.02 CARATS**  
Color Grade **F**  
Clarity Grade **VVS 2**  
Cut Grade **EXCELLENT**

**PROPORTIONS**



Sample Image Used



**ADDITIONAL GRADING INFORMATION**  
Polish **EXCELLENT**  
Symmetry **EXCELLENT**  
Fluorescence **NONE**  
Inscription(s) **IGI LG739593859**

Comments: This Laboratory Grown Diamond was created by Chemical Vapor Deposition (CVD) growth process. Type IIa

**COLOR**

D E F G H I J Faint Very Light Light

**CLARITY**

FL	IF	VS <sup>1-2</sup>	VS <sup>1-2</sup>	SI <sup>1-2</sup>	I <sup>1-3</sup>
Flawless	Internally Flawless	Very Very Slightly Included	Very Slightly Included	Slightly Included	Included

**ADDITIONAL GRADING INFORMATION**

Polish **EXCELLENT**  
Symmetry **EXCELLENT**  
Fluorescence **NONE**  
Inscription(s) **IGI LG739593859**  
Comments: This Laboratory Grown Diamond was created by Chemical Vapor Deposition (CVD) growth process. Type IIa



**IGI**



October 6, 2025  
IGI Report No LG739593859  
**ROUND BRILLIANT**  
11.06 - 11.11 X 6.72 MM  
Carat Weight **5.02 CARATS**  
Color Grade **F**  
Clarity Grade **VVS 2**  
Cut Grade **EXCELLENT**  
Depth **60.6%**  
Table **56%**  
Girdle **Medium (Faceted)**  
Culet **Pointed**  
Polish **EXCELLENT**  
Symmetry **EXCELLENT**  
Fluorescence **NONE**  
Inscriptions(s) **IGI LG739593859**  
Comments: This Laboratory Grown Diamond was created by Chemical Vapor Deposition (CVD) growth process. Type IIa