



**LABORATORY GROWN DIAMOND REPORT**

October 7, 2025  
 IGI Report Number **LG739590623**  
 Description **LABORATORY GROWN DIAMOND**  
 Shape and Cutting Style **BAGUETTE**  
 Measurements **6.03 X 4.04 X 2.64 MM**

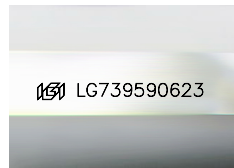
**GRADING RESULTS**

Carat Weight **0.68 CARAT**  
 Color Grade **F**  
 Clarity Grade **VVS 2**

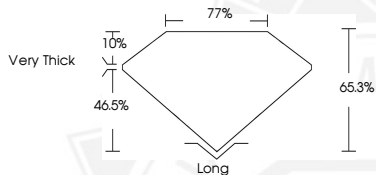
**ADDITIONAL GRADING INFORMATION**

Polish **VERY GOOD**  
 Symmetry **EXCELLENT**  
 Fluorescence **NONE**  
 Inscription(s) **IGI LG739590623**

Comments: This Laboratory Grown Diamond was created by Chemical Vapor Deposition (CVD) growth process. Type IIa



Sample Image Used



October 7, 2025  
 IGI Report Number **LG739590623**  
**BAGUETTE**  
**LABORATORY GROWN DIAMOND**  
**6.03 X 4.04 X 2.64 MM**  
 Carat Weight **0.68 CARAT**  
 Color Grade **F**  
 Clarity Grade **VVS 2**  
 Polish **VERY GOOD**  
 Symmetry **EXCELLENT**  
 Fluorescence **NONE**  
 Inscription(s) **IGI LG739590623**

Comments: This Laboratory Grown Diamond was created by Chemical Vapor Deposition (CVD) growth process. Type IIa



October 7, 2025  
 IGI Report Number **LG739590623**  
**BAGUETTE**  
**LABORATORY GROWN DIAMOND**  
**6.03 X 4.04 X 2.64 MM**  
 Carat Weight **0.68 CARAT**  
 Color Grade **F**  
 Clarity Grade **VVS 2**  
 Polish **VERY GOOD**  
 Symmetry **EXCELLENT**  
 Fluorescence **NONE**  
 Inscription(s) **IGI LG739590623**

Comments: This Laboratory Grown Diamond was created by Chemical Vapor Deposition (CVD) growth process. Type IIa



THIS DOCUMENT WAS PRODUCED WITH THE FOLLOWING SECURITY MEASURES: SPECIAL DOCUMENT PAPER, INK SCREENS, WATERMARK, BACKGROUND DESIGNS, HOLOGRAM AND OTHER SECURITY FEATURES NOT LISTED AND DO EXCEED DOCUMENT SECURITY INDUSTRY GUIDELINES.