



**ELECTRONIC COPY**

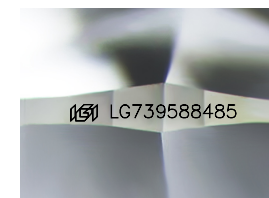
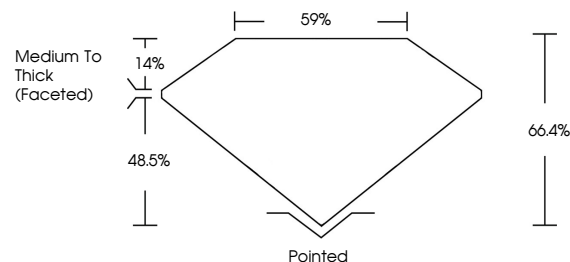
LG739588485  
Report verification at [igi.org](http://igi.org)



October 9, 2025  
IGI Report Number **LG739588485**  
Description **LABORATORY GROWN DIAMOND**  
Shape and Cutting Style **CUSHION MODIFIED BRILLIANT**  
Measurements **15.73 X 11.32 X 7.52 MM**  
**GRADING RESULTS**  
Carat Weight **10.51 CARATS**  
Color Grade **F**  
Clarity Grade **VVS 2**

October 9, 2025  
IGI Report Number **LG739588485**  
Description **LABORATORY GROWN DIAMOND**  
Shape and Cutting Style **CUSHION MODIFIED BRILLIANT**  
Measurements **15.73 X 11.32 X 7.52 MM**

**PROPORTIONS**

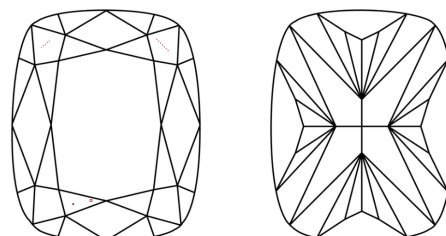


Sample Image Used

**GRADING RESULTS**

Carat Weight **10.51 CARATS**  
Color Grade **F**  
Clarity Grade **VVS 2**

**CLARITY CHARACTERISTICS**



**KEY TO SYMBOLS**

Red symbols indicate internal characteristics.  
Green symbols indicate external characteristics.

**ADDITIONAL GRADING INFORMATION**

Polish **EXCELLENT**  
Symmetry **EXCELLENT**  
Fluorescence **NONE**  
Inscription(s) **IGI LG739588485**

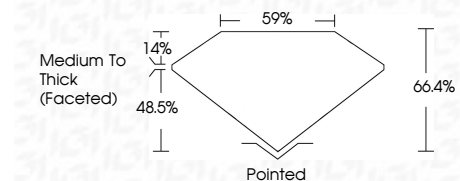
Comments: This Laboratory Grown Diamond was created by Chemical Vapor Deposition (CVD) growth process.  
Type IIa

**COLOR**

D E F G H I J Faint Very Light Light

**CLARITY**

FL	IF	VVS <sup>1-2</sup>	VS <sup>1-2</sup>	SI <sup>1-2</sup>	I <sup>1-3</sup>
Flawless	Internally Flawless	Very Very Slightly Included	Very Slightly Included	Slightly Included	Included



**ADDITIONAL GRADING INFORMATION**

Polish **EXCELLENT**  
Symmetry **EXCELLENT**  
Fluorescence **NONE**  
Inscription(s) **IGI LG739588485**  
Comments: This Laboratory Grown Diamond was created by Chemical Vapor Deposition (CVD) growth process.  
Type IIa



October 9, 2025  
IGI Report No LG739588485  
CUSHION MODIFIED BRILLIANT

10.51 CARATS  
Carat Weight  
Color Grade **F**  
Clarity Grade **VVS 2**  
Depth **66.4%**  
Table **59%**  
Girdle **Medium To Thick (Faceted)**  
Culet **Pointed**  
Polish **EXCELLENT**  
Symmetry **EXCELLENT**  
Fluorescence **NONE**  
Inscription(s) **IGI LG739588485**

Comments: This Laboratory Grown Diamond was created by Chemical Vapor Deposition (CVD) growth process.  
Type IIa