



ELECTRONIC COPY

LG739586235
Report verification at igi.org



November 11, 2025
IGI Report Number **LG739586235**
Description **LABORATORY GROWN DIAMOND**
Shape and Cutting Style **SQUARE CUSHION MODIFIED BRILLIANT**
Measurements **9.05 X 8.97 X 5.92 MM**
GRADING RESULTS
Carat Weight **4.07 CARATS**
Color Grade **FANCY VIVID BLUE**
Clarity Grade **VVS 2**

LABORATORY GROWN DIAMOND REPORT

November 11, 2025
IGI Report Number **LG739586235**
Description **LABORATORY GROWN DIAMOND**
Shape and Cutting Style **SQUARE CUSHION MODIFIED BRILLIANT**
Measurements **9.05 X 8.97 X 5.92 MM**

GRADING RESULTS

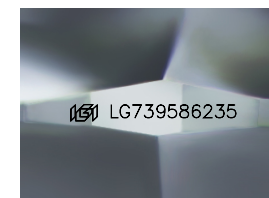
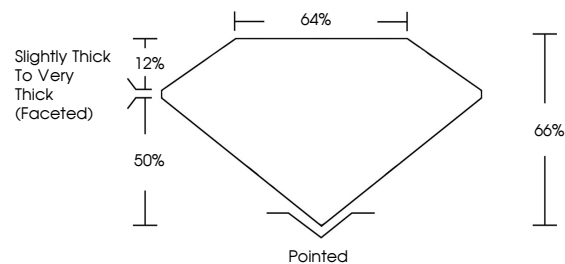
Carat Weight **4.07 CARATS**
Color Grade **FANCY VIVID BLUE**
Clarity Grade **VVS 2**

ADDITIONAL GRADING INFORMATION

Polish **EXCELLENT**
Symmetry **EXCELLENT**
Fluorescence **NONE**
Inscription(s) **IGI LG739586235**

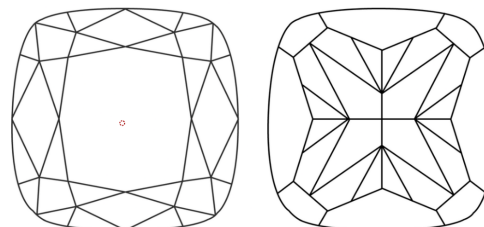
Comments: This Laboratory Grown Diamond was created by High Pressure High Temperature (HPHT) growth process. Indications of post-growth treatment.

PROPORTIONS



Sample Image Used

CLARITY CHARACTERISTICS



KEY TO SYMBOLS

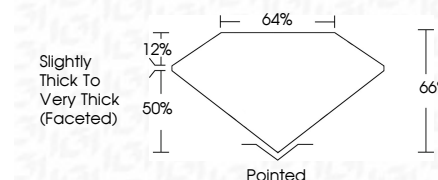
Red symbols indicate internal characteristics.
Green symbols indicate external characteristics.

COLOR

D E F G H I J Faint Very Light Light

CLARITY

FL	IF	VVS ¹⁻²	VS ¹⁻²	SI ¹⁻²	I ¹⁻³
Flawless	Internally Flawless	Very Very Slightly Included	Very Slightly Included	Slightly Included	Included



ADDITIONAL GRADING INFORMATION

Polish **EXCELLENT**
Symmetry **EXCELLENT**
Fluorescence **NONE**
Inscription(s) **IGI LG739586235**
Comments: This Laboratory Grown Diamond was created by High Pressure High Temperature (HPHT) growth process. Indications of post-growth treatment.



IGI



November 11, 2025
IGI Report No LG739586235
SQUARE CUSHION MODIFIED BRILLIANT
9.05 X 8.97 X 5.92 MM
4.07 CARATS
FANCY VIVID BLUE
VVS 2
66%
64%
Slightly Thick To Very Thick (Faceted)
Pointed
EXCELLENT
EXCELLENT
NONE
IGI LG739586235

Comments: This Laboratory Grown Diamond was created by High Pressure High Temperature (HPHT) growth process. Indications of post-growth treatment.