



**ELECTRONIC COPY**

## LABORATORY GROWN DIAMOND REPORT

|                         |                          |
|-------------------------|--------------------------|
| November 6, 2025        |                          |
| IGI Report Number       | LG739585852              |
| Description             | LABORATORY GROWN DIAMOND |
| Shape and Cutting Style | ROUND BRILLIANT          |
| Measurements            | 6.69 - 6.70 X 4.10 MM    |

## GRADING RESULTS

|               |            |
|---------------|------------|
| Carat Weight  | 1.13 CARAT |
| Color Grade   | D          |
| Clarity Grade | VVS 2      |
| Cut Grade     | IDEAL      |

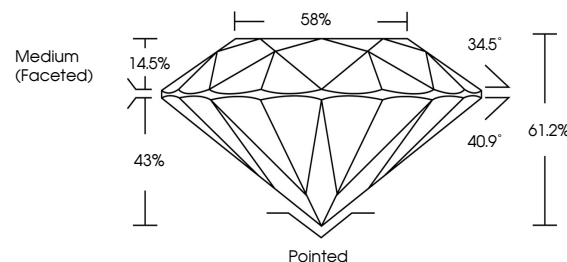
### ADDITIONAL GRADING INFORMATION

|                |   |
|----------------|---|
| Polish         | EXCELLENT   |
| Symmetry       | EXCELLENT   |
| Fluorescence   | NONE  |
| Inscription(s) |  LG739585852 |

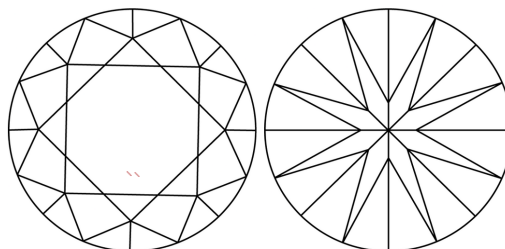
Comments: HEARTS & ARROWS  
As Grown - No indication of post-growth treatment.  
This Laboratory Grown Diamond was created by High  
Pressure High Temperature (HPHT) growth process.  
Type II

LG739585852  
Report verification at [lgi.org](https://lgi.org)

## PROPORTIONS



## CLARITY CHARACTERISTICS

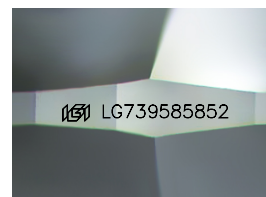


## KEY TO SYMBOLS

Red symbols indicate internal characteristics.  
Green symbols indicate external characteristics.



**www.igi.org**



Sample Image Used

## COLOR

D E F G H I J Faint Very Light Light

## CLARITY

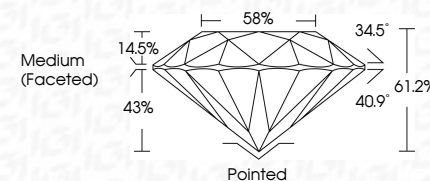
| FL       | IF                  | VVS <sup>1-2</sup>          | VS <sup>1-2</sup>      | SI <sup>1-2</sup> | I <sup>1-3</sup> |
|----------|---------------------|-----------------------------|------------------------|-------------------|------------------|
| Flawless | Internally Flawless | Very Very Slightly Included | Very Slightly Included | Slightly Included | Included         |



|                         |                          |
|-------------------------|--------------------------|
| November 6, 2025        |                          |
| IGI Report Number       | LG739585852              |
| Description             | LABORATORY GROWN DIAMOND |
| Shape and Cutting Style | ROUND BRILLIANT          |
| Measurements            | 6.69 - 6.70 X 4.10 MM    |

## GRADING RESULTS

|               |            |
|---------------|------------|
| Carat Weight  | 1.13 CARAT |
| Color Grade   | D          |
| Clarity Grade | VVS 2      |
| Cut Grade     | IDEAL      |



### ADDITIONAL GRADING INFORMATION

|  |   |
|--|---|
| Polish   | EXCELLENT   |
| Symmetry   | EXCELLENT   |
| Fluorescence   | NONE  |
| Inscription(s)   |  LG739585852 |
| Comments: HEARTS & ARROWS  |   |
| As Grown - No indication of post-growth treatment.   |   |
| This Laboratory Grown Diamond was created by High Pressure High Temperature (HPHT) growth process. |   |
| Type II  |   |



© IGI 2020, International Gemological Institute

FD - 10 20



THIS DOCUMENT WAS PRODUCED WITH THE FOLLOWING SECURITY MEASURES: SPECIAL DOCUMENT PAPER, INK SCREENS, WATERMARK, BACKGROUND DESIGNS, HOLOGRAM AND OTHER SECURITY FEATURES NOT LISTED AND DO EXCEED DOCUMENT SECURITY INDUSTRY GUIDELINES

|                          |  |
|--------------------------|--|
| November 4, 2026         | 1.13 CARAT   |
| GI Report No. L279058582 | D  |
| ROUND BRILLIANT          | VVS 2  |
|                          | IDEAL  |
|                          | 61.2%  |
|                          | 59%  |
|                          | Medium (Faceted)   |
|                          | Ported   |
|                          | EXCELLENT  |
|                          | EXCELLENT  |
|                          | NONE   |
|                          | 491 LG79058582   |
|                          | Comments:  |
|                          | As Grown - No indication of post-growth treatment.   |
|                          | This Laboratory Grown Diamond was created by High Pressure High Temperature (HPHT) growth process. |