



ELECTRONIC COPY

LG739584951
Report verification at igi.org



October 16, 2025
IGI Report Number LG739584951
Description LABORATORY GROWN DIAMOND
Shape and Cutting Style ROUND BRILLIANT
Measurements 7.56 - 7.60 X 4.53 MM
GRADING RESULTS
Carat Weight 1.57 CARAT
Color Grade FANCY VIVID BLUE
Clarity Grade SI 2
Cut Grade EXCELLENT

October 16, 2025
IGI Report Number LG739584951
Description LABORATORY GROWN DIAMOND
Shape and Cutting Style ROUND BRILLIANT
Measurements 7.56 - 7.60 X 4.53 MM

GRADING RESULTS

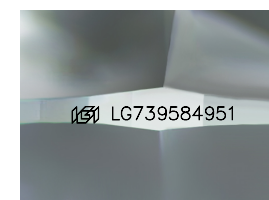
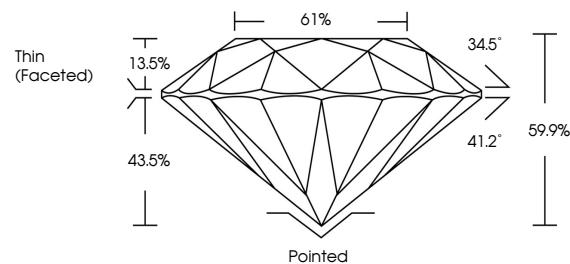
Carat Weight 1.57 CARAT
Color Grade FANCY VIVID BLUE
Clarity Grade SI 2
Cut Grade EXCELLENT

ADDITIONAL GRADING INFORMATION

Polish EXCELLENT
Symmetry EXCELLENT
Fluorescence NONE
Inscription(s) IGI LG739584951

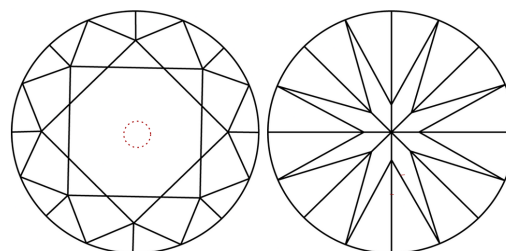
Comments: This Laboratory Grown Diamond was created by Chemical Vapor Deposition (CVD) growth process.
Indications of post-growth treatment.

PROPORTIONS



Sample Image Used

CLARITY CHARACTERISTICS



KEY TO SYMBOLS

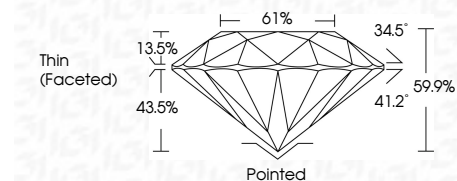
Red symbols indicate internal characteristics.
Green symbols indicate external characteristics.

COLOR

D E F G H I J Faint Very Light Light

CLARITY

FL IF VS 1-2 VS 1-2 SI 1-2 I 1-3
Flawless Internally Flawless Very Very Slightly Included Very Slightly Included Slightly Included Included



ADDITIONAL GRADING INFORMATION

Polish EXCELLENT
Symmetry EXCELLENT
Fluorescence NONE
Inscription(s) IGI LG739584951
Comments: This Laboratory Grown Diamond was created by Chemical Vapor Deposition (CVD) growth process.
Indications of post-growth treatment.



October 16, 2025
IGI Report No LG739584951
ROUND BRILLIANT
1.57 CARAT
Carat Weight
FANCY VIVID BLUE
Color Grade
SI 2
Clarity Grade
EXCELLENT
EXCELLENT
Depth 61.9%
Table 61%
Girdle Thin (Faceted)
Culet Pointed
Polish EXCELLENT
Symmetry EXCELLENT
Fluorescence NONE
Inscriptions(s) IGI LG739584951
Comments: This Laboratory Grown Diamond was created by Chemical Vapor Deposition (CVD) growth process.
Indications of post-growth treatment.