



**INTERNATIONAL  
GEMOLOGICAL  
INSTITUTE**

**ELECTRONIC COPY**

LG739584669  
Report verification at [igi.org](https://igi.org)

LABORATORY GROWN DIAMOND REPORT



October 15, 2025

IGI Report Number **LG739584669**

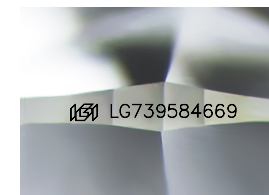
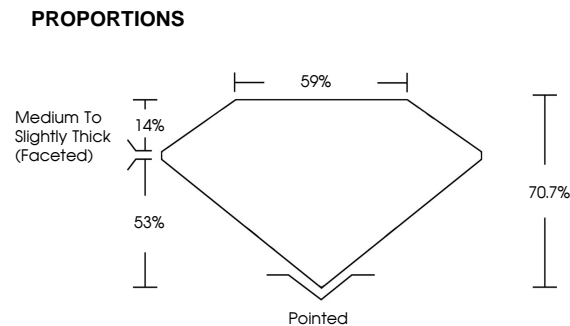
Description	LABORATORY GROWN DIAMOND
-------------	--------------------------

Shape and Cutting Style **CUSHION MODIFIED  
BRILLIANT**

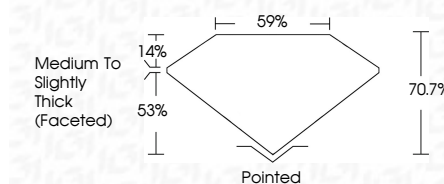
Measurements 10.00 X 7.67 X 5.42 MM

## GRADING RESULTS

Carat Weight **3.09 CARATS**

Color Grade **E**Clarity Grade WS 2

Sample Image Used



## COLOR

D E F G H I J Faint Very Light Light

## CLARITY

FL IF WS<sup>1-2</sup> VS<sup>1-2</sup> SI<sup>1-2</sup> |<sup>1-3</sup>

Flawless	Internally Flawless	Very Very Slightly Included	Very Slightly Included	Slightly Included	Included
----------	---------------------	-----------------------------	------------------------	-------------------	----------



© IGI 2020, International Gemological Institute

FD - 10 20

**www.igi.org**



October 15, 2025	3.09 CARATS
GI Report No. LG79584649	
CUSHION MODIFIED BRILLIANT	
10.00 X 7.67 X 5.42 MM	
Carat Weight	
Color Grade	E
Clarity Grade	VVS 2
Depth	70.7%
Table	89%
Girdle	Medium to Slightly Thick (Faceted)
Culet	Pointed
Polish	EXCELLENT
Symmetry	EXCELLENT
Fluorescence	NONE
Inscriptions(s)	lgsl LG79584649
Comments:	
Laboratory Grown Diamond was identified by Thermal Vapor Deposition (CVD) growth process. Type IIG	

**Comments:**  
This Laboratory Grown Diamond was  
created by Chemical Vapor Deposition  
(CVD) growth process.