



ELECTRONIC COPY

LG739584171
Report verification at igi.org



November 19, 2025

IGI Report Number **LG739584171**

Description **LABORATORY GROWN DIAMOND**

Shape and Cutting Style **EMERALD CUT**

Measurements **13.45 X 9.16 X 6.05 MM**

GRADING RESULTS

Carat Weight **8.04 CARATS**

Color Grade **FANCY INTENSE PINK**

Clarity Grade **VS 2**

LABORATORY GROWN DIAMOND REPORT

November 19, 2025

IGI Report Number **LG739584171**

Description **LABORATORY GROWN DIAMOND**

Shape and Cutting Style **EMERALD CUT**

Measurements **13.45 X 9.16 X 6.05 MM**

GRADING RESULTS

Carat Weight **8.04 CARATS**

Color Grade **FANCY INTENSE PINK**

Clarity Grade **VS 2**

ADDITIONAL GRADING INFORMATION

Polish **EXCELLENT**

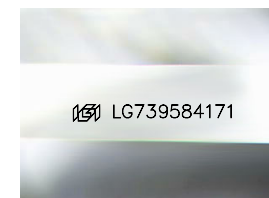
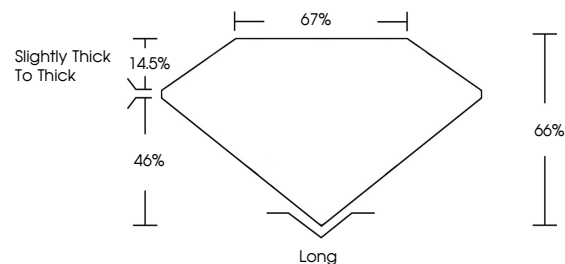
Symmetry **EXCELLENT**

Fluorescence **STRONG**

Inscription(s) **LG739584171**

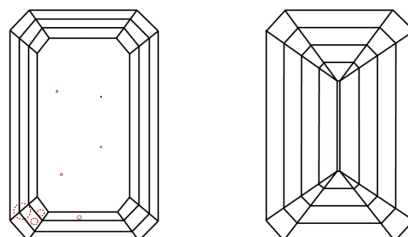
Comments: This Laboratory Grown Diamond was created by Chemical Vapor Deposition (CVD) growth process. Indications of post-growth treatment.

PROPORTIONS



Sample Image Used

CLARITY CHARACTERISTICS



KEY TO SYMBOLS

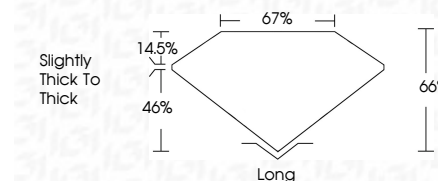
Red symbols indicate internal characteristics.
Green symbols indicate external characteristics.

COLOR

D E F G H I J Faint Very Light Light

CLARITY

FL	IF	VS ¹⁻²	VS ¹⁻²	SI ¹⁻²	I ¹⁻³
Flawless	Internally Flawless	Very Very Slightly Included	Very Slightly Included	Slightly Included	Included



ADDITIONAL GRADING INFORMATION

Polish **EXCELLENT**

Symmetry **EXCELLENT**

Fluorescence **STRONG**

Inscription(s) **LG739584171**

Comments: This Laboratory Grown Diamond was created by Chemical Vapor Deposition (CVD) growth process. Indications of post-growth treatment.



November 19, 2025
IGI Report No LG739584171
EMERALD CUT

8.04 CARATS
Carat Weight
FANCY INTENSE PINK
Color Grade

VS 2
Clarity Grade
66%
Table
67%
Girdle
Slightly thick to Thick

Long
Culet
EXCELLENT
Polish
EXCELLENT
Symmetry
STRONG
Fluorescence
IGI LG739584171
Inscription(s)

Comments: This Laboratory Grown Diamond was created by Chemical Vapor Deposition (CVD) growth process. Indications of post-growth treatment.