



# INTERNATIONAL GEMOLOGICAL INSTITUTE

ELECTRONIC COPY

## LABORATORY GROWN DIAMOND REPORT

December 2, 2025  
IGI Report Number **LG739581116**  
Description **LABORATORY GROWN DIAMOND**  
Shape and Cutting Style **OVAL STEP CUT**  
Measurements **7.80 X 4.86 X 2.94 MM**

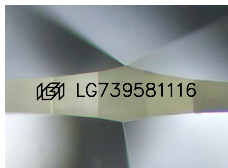
### GRADING RESULTS

Carat Weight **0.84 CARAT**  
Color Grade **FANCY VIVID YELLOW**  
Clarity Grade **VVS 2**

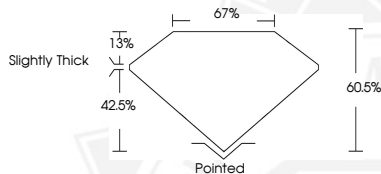
### ADDITIONAL GRADING INFORMATION

Polish **EXCELLENT**  
Symmetry **EXCELLENT**  
Fluorescence **NONE**  
Inscription(s) **IGI LG739581116**

Comments: As Grown - No indication of post-growth treatment.  
This Laboratory Grown Diamond was created by High Pressure High Temperature (HPHT) growth process.



Sample Image Used



December 2, 2025

IGI Report Number **LG739581116**  
OVAL STEP CUT  
LABORATORY GROWN DIAMOND  
7.80 X 4.86 X 2.94 MM

Carat Weight **0.84 CARAT**  
Color Grade **FANCY VIVID YELLOW**  
Clarity Grade **VVS 2**  
Polish **EXCELLENT**  
Symmetry **EXCELLENT**  
Fluorescence **NONE**  
Inscription(s) **IGI LG739581116**

Comments: As Grown - No indication of post-growth treatment. This Laboratory Grown Diamond was created by High Pressure High Temperature (HPHT) growth process.



December 2, 2025

IGI Report Number **LG739581116**  
OVAL STEP CUT  
LABORATORY GROWN DIAMOND  
7.80 X 4.86 X 2.94 MM

Carat Weight **0.84 CARAT**  
Color Grade **FANCY VIVID YELLOW**  
Clarity Grade **VVS 2**  
Polish **EXCELLENT**  
Symmetry **EXCELLENT**  
Fluorescence **NONE**  
Inscription(s) **IGI LG739581116**

Comments: As Grown - No indication of post-growth treatment. This Laboratory Grown Diamond was created by High Pressure High Temperature (HPHT) growth process.



THIS DOCUMENT WAS PRODUCED WITH THE FOLLOWING SECURITY MEASURES: SPECIAL DOCUMENT PAPER, INK SCREENS, WATERMARK, BACKGROUND DESIGNS, HOLOGRAM AND OTHER SECURITY FEATURES NOT LISTED AND DO EXCEED DOCUMENT SECURITY INDUSTRY GUIDELINES.

For terms & conditions and to verify this report, please visit [www.igi.org](http://www.igi.org)