



**ELECTRONIC COPY**

LG739580045  
Report verification at igi.org



November 10, 2025

IGI Report Number **LG739580045**

Description **LABORATORY GROWN DIAMOND**

Shape and Cutting Style **PRINCESS CUT**

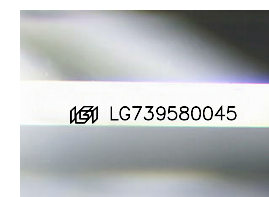
Measurements **7.01 X 6.98 X 4.80 MM**

**GRADING RESULTS**

Carat Weight **2.05 CARATS**

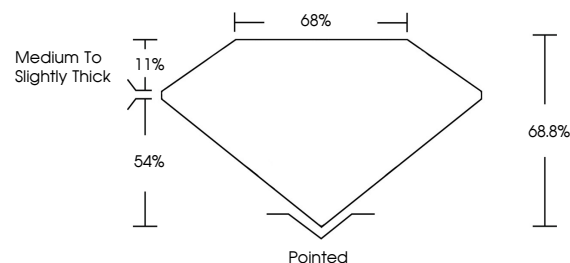
Color Grade **E**

Clarity Grade **VVS 1**

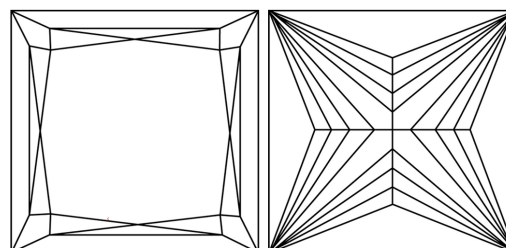


Sample Image Used

**PROPORTIONS**



**CLARITY CHARACTERISTICS**



**KEY TO SYMBOLS**

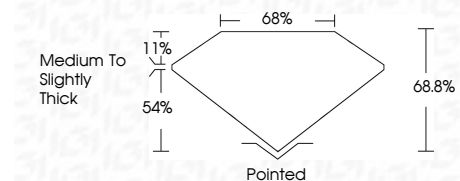
Red symbols indicate internal characteristics.  
Green symbols indicate external characteristics.

**COLOR**

D E F G H I J Faint Very Light Light

**CLARITY**

FL	IF	VVS <sup>1-2</sup>	VS <sup>1-2</sup>	SI <sup>1-2</sup>	I <sup>1-3</sup>
Flawless	Internally Flawless	Very Very Slightly Included	Very Slightly Included	Slightly Included	Included



**ADDITIONAL GRADING INFORMATION**

Polish **EXCELLENT**

Symmetry **EXCELLENT**

Fluorescence **NONE**

Inscription(s) **IGI LG739580045**

Comments: This Laboratory Grown Diamond was created by Chemical Vapor Deposition (CVD) growth process. Type IIa



**IGI**



November 10, 2025  
IGI Report No LG739580045  
PRINCESS CUT

2.05 CARATS  
E

7.01 X 6.98 X 4.80 MM

Carat Weight  
Color Grade  
Clarity Grade  
Table  
Depth  
Girdle  
Medium to Slightly Thick

VS 1  
68.8%  
55%

Pointed  
EXCELLENT  
EXCELLENT  
NONE  
IGI LG739580045

Culet  
Polish  
Symmetry  
Fluorescence  
Inscription(s)

Comments: This Laboratory Grown Diamond was created by Chemical Vapor Deposition (CVD) growth process. Type IIa