



ELECTRONIC COPY

LG739576388
Report verification at igi.org



November 14, 2025
IGI Report Number **LG739576388**
Description **LABORATORY GROWN DIAMOND**
Shape and Cutting Style **CUT CORNERED
RECTANGULAR MIXED CUT**
Measurements **11.69 X 8.55 X 5.82 MM**
GRADING RESULTS
Carat Weight **5.43 CARATS**
Color Grade **FANCY INTENSE YELLOW**
Clarity Grade **VS 1**

LABORATORY GROWN DIAMOND REPORT

November 14, 2025
IGI Report Number **LG739576388**
Description **LABORATORY GROWN DIAMOND**
Shape and Cutting Style **CUT CORNERED RECTANGULAR
MIXED CUT**
Measurements **11.69 X 8.55 X 5.82 MM**

GRADING RESULTS

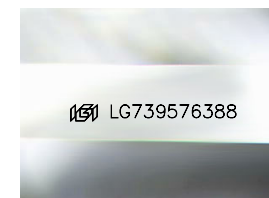
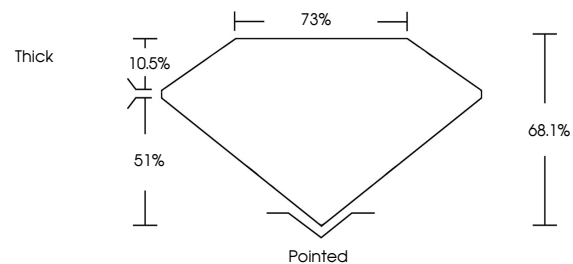
Carat Weight **5.43 CARATS**
Color Grade **FANCY INTENSE YELLOW**
Clarity Grade **VS 1**

ADDITIONAL GRADING INFORMATION

Polish **EXCELLENT**
Symmetry **EXCELLENT**
Fluorescence **NONE**
Inscription(s) **IGI LG739576388**

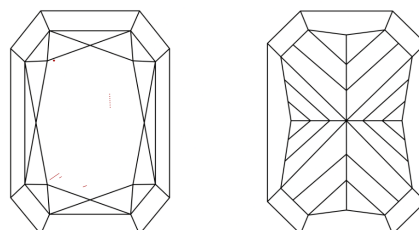
Comments: This Laboratory Grown Diamond was created by Chemical Vapor Deposition (CVD) growth process.

PROPORTIONS



Sample Image Used

CLARITY CHARACTERISTICS



KEY TO SYMBOLS

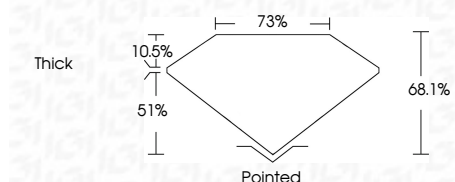
Red symbols indicate internal characteristics.
Green symbols indicate external characteristics.

COLOR

D E F G H I J Faint Very Light Light

CLARITY

FL	IF	VS ¹⁻²	VS ¹⁻²	SI ¹⁻²	I ¹⁻³
Flawless	Internally Flawless	Very Very Slightly Included	Very Slightly Included	Slightly Included	Included



ADDITIONAL GRADING INFORMATION

Polish **EXCELLENT**
Symmetry **EXCELLENT**
Fluorescence **NONE**
Inscription(s) **IGI LG739576388**
Comments: This Laboratory Grown Diamond was created by Chemical Vapor Deposition (CVD) growth process.



IGI



November 14, 2025
IGI Report No LG739576388
CUT CORNERED RECT. MIXED CUT
11.69 X 8.55 X 5.82 MM
5.43 CARATS
FANCY INTENSE YELLOW
VS 1
68.1%
75%
Thick
Pointed
EXCELLENT
EXCELLENT
NONE
IGI LG739576388
Comments: This Laboratory Grown Diamond was created by Chemical Vapor Deposition (CVD) growth process.