



ELECTRONIC COPY

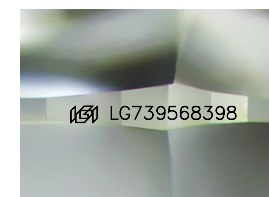
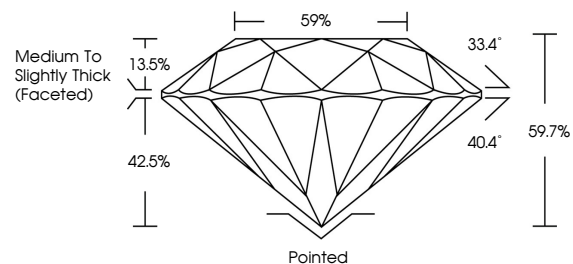
LG739568398
Report verification at igi.org



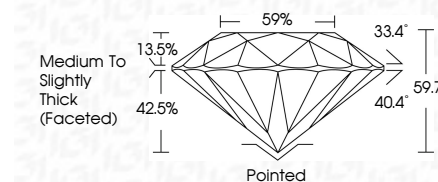
October 8, 2025
IGI Report Number **LG739568398**
Description **LABORATORY GROWN DIAMOND**
Shape and Cutting Style **ROUND BRILLIANT**
Measurements **9.58 - 9.61 X 5.73 MM**
GRADING RESULTS
Carat Weight **3.23 CARATS**
Color Grade **E**
Clarity Grade **VS 1**
Cut Grade **IDEAL**

October 8, 2025
IGI Report Number **LG739568398**
Description **LABORATORY GROWN DIAMOND**
Shape and Cutting Style **ROUND BRILLIANT**
Measurements **9.58 - 9.61 X 5.73 MM**
GRADING RESULTS
Carat Weight **3.23 CARATS**
Color Grade **E**
Clarity Grade **VS 1**
Cut Grade **IDEAL**

PROPORTIONS



Sample Image Used



ADDITIONAL GRADING INFORMATION

Polish **EXCELLENT**
Symmetry **EXCELLENT**
Fluorescence **NONE**
Inscription(s) **IGI LG739568398**

Comments: This Laboratory Grown Diamond was created by Chemical Vapor Deposition (CVD) growth process. Type IIa

ADDITIONAL GRADING INFORMATION

Polish **EXCELLENT**
Symmetry **EXCELLENT**
Fluorescence **NONE**
Inscription(s) **IGI LG739568398**
Comments: This Laboratory Grown Diamond was created by Chemical Vapor Deposition (CVD) growth process. Type IIa

COLOR

D E F G H I J Faint Very Light Light

CLARITY

FL	IF	VS ¹⁻²	VS ¹⁻²	SI ¹⁻²	I ¹⁻³
Flawless	Internally Flawless	Very Very Slightly Included	Very Slightly Included	Slightly Included	Included



IGI



October 8, 2025
IGI Report No **LG739568398**
ROUND BRILLIANT
9.58 - 9.61 X 5.73 MM
3.23 CARATS
E
VS 1
IDEAL
59.7%
59%
Medium To Slightly Thick (Faceted)
Pointed
EXCELLENT
EXCELLENT
NONE
IGI LG739568398
Comments: This Laboratory Grown Diamond was created by Chemical Vapor Deposition (CVD) growth process. Type IIa