



ELECTRONIC COPY

LG739566335
Report verification at igi.org



October 12, 2025
IGI Report Number **LG739566335**
Description **LABORATORY GROWN DIAMOND**
Shape and Cutting Style **CUSHION MODIFIED BRILLIANT**
Measurements **12.03 X 11.22 X 7.06 MM**
GRADING RESULTS
Carat Weight **9.08 CARATS**
Color Grade **FANCY INTENSE GREYISH YELLOW**
Clarity Grade **VS 1**

October 12, 2025
IGI Report Number **LG739566335**
Description **LABORATORY GROWN DIAMOND**
Shape and Cutting Style **CUSHION MODIFIED BRILLIANT**
Measurements **12.03 X 11.22 X 7.06 MM**

GRADING RESULTS

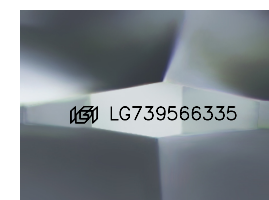
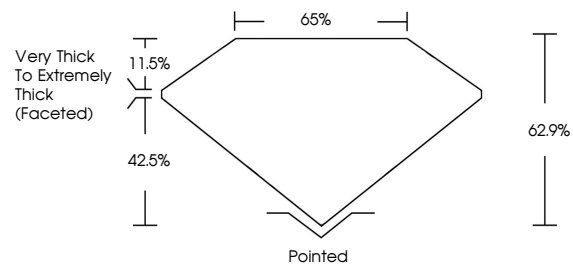
Carat Weight **9.08 CARATS**
Color Grade **FANCY INTENSE GREYISH YELLOW**
Clarity Grade **VS 1**

ADDITIONAL GRADING INFORMATION

Polish **EXCELLENT**
Symmetry **EXCELLENT**
Fluorescence **NONE**
Inscription(s) **IGI LG739566335**

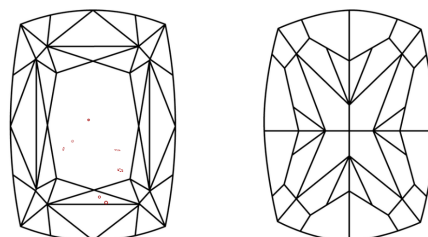
Comments: This Laboratory Grown Diamond was created by Chemical Vapor Deposition (CVD) growth process.

PROPORTIONS



Sample Image Used

CLARITY CHARACTERISTICS



KEY TO SYMBOLS

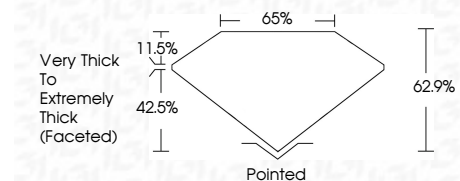
Red symbols indicate internal characteristics.
Green symbols indicate external characteristics.

COLOR

D E F G H I J Faint Very Light Light

CLARITY

FL	IF	VS ¹⁻²	VS ¹⁻²	SI ¹⁻²	I ¹⁻³
Flawless	Internally Flawless	Very Very Slightly Included	Very Slightly Included	Slightly Included	Included



ADDITIONAL GRADING INFORMATION

Polish **EXCELLENT**
Symmetry **EXCELLENT**
Fluorescence **NONE**
Inscription(s) **IGI LG739566335**
Comments: This Laboratory Grown Diamond was created by Chemical Vapor Deposition (CVD) growth process.



October 12, 2025
IGI Report No LG739566335
CUSHION MODIFIED BRILLIANT
12.03 X 11.22 X 7.06 MM
9.08 CARATS
Carat Weight
FANCY INTENSE GREYISH YELLOW
Color Grade
VS 1
Clarity Grade
62.9%
Depth
65%
Table
Very Thick to Extremely Thick (Faceted)
Girdle
Pointed
Culet
EXCELLENT
Polish
EXCELLENT
Symmetry
EXCELLENT
Fluorescence
NONE
Inscription(s)
IGI LG739566335
Comments: This Laboratory Grown Diamond was created by Chemical Vapor Deposition (CVD) growth process.