



ELECTRONIC COPY

LABORATORY GROWN DIAMOND REPORT

October 4, 2025	
IGI Report Number	LG739566040
Description	LABORATORY GROWN DIAMOND
Shape and Cutting Style	ROUND BRILLIANT
Measurements	12.40 - 12.46 X 7.39 MM

GRADING RESULTS

Carat Weight	7.01 CARATS
Color Grade	G
Clarity Grade	VVS 2
Cut Grade	IDEAL

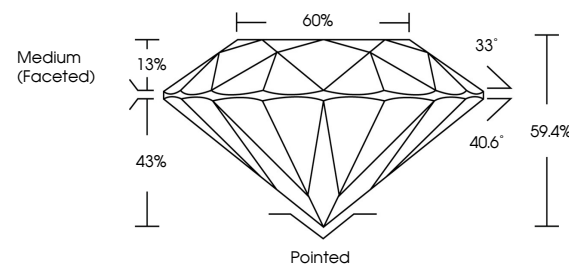
ADDITIONAL GRADING INFORMATION

Polish	EXCELLENT
Symmetry	EXCELLENT
Fluorescence	NONE
Inscription(s)	 LG739566040

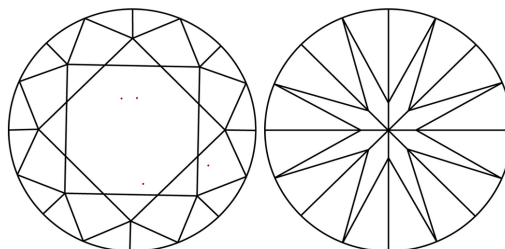
Comments: This Laboratory Grown Diamond was created by Chemical Vapor Deposition (CVD) growth process.
Type IIa

LG739566040
Report verification at igi.org

PROPORTIONS

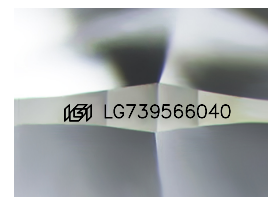


CLARITY CHARACTERISTICS



KEY TO SYMBOLS

Red symbols indicate internal characteristics.
Green symbols indicate external characteristics.



Sample Image Used

COLOR

D E F G H I J Faint Very Light Light

CLARITY

FL	IF	VVS ¹⁻²	VS ¹⁻²	SI ¹⁻²	I ¹⁻³
Flawless	Internally Flawless	Very Very Slightly Included	Very Slightly Included	Slightly Included	Included

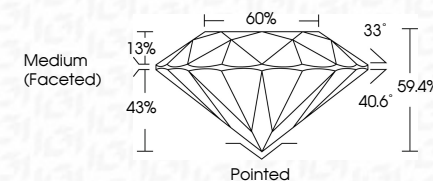
LABORATORY GROWN DIAMOND REPORT



October 4, 2025	
IGI Report Number	LG739566040
Description	LABORATORY GROWN DIAMOND
Shape and Cutting Style	ROUND BRILLIANT
Measurements	12.40 - 12.46 X 7.39 MM

GRADING RESULTS

Carat Weight	7.01 CARATS
Color Grade	G
Clarity Grade	VVS 2
Cut Grade	IDEAL



ADDITIONAL GRADING INFORMATION

Polish	EXCELLENT
Symmetry	EXCELLENT
Fluorescence	NONE
Inscription(s)	 LG739566040
<p>Comments: This Laboratory Grown Diamond was created by Chemical Vapor Deposition (CVD) growth process.</p> <p>Type IIa</p>	



© IGI 2020, International Gemological Institute

FD - 10 20



THIS DOCUMENT WAS PRODUCED WITH THE FOLLOWING SECURITY MEASURES: SPECIAL DOCUMENT PAPER, INK SCREENS, WATERMARK, BACKGROUND DESIGNS, HOLOGRAM AND OTHER SECURITY FEATURES NOT LISTED AND DO EXCEED DOCUMENT SECURITY INDUSTRY GUIDELINES

www.igi.org

October 4, 2025	7.01 CARATS	VVS 2	Polished
GL Report No. LG78956540	Color Grade	IDEAL	EXCELLENT
ROUND BRILLIANT	Carat Weight	59.4%	EXCELLENT
12.40 - 12.46 X 7.39 MM	Clarity Grade	60%	NONE
	Cut Grade	Medium (Faceted)	ISS: LG78956540
	Depth		Comments:
	Table		Created by: Chemist Diamond was
	Girdle		examined by: Chemical Vapor Deposition
			(CVD) growth process.
			Type IIa