



ELECTRONIC COPY

LABORATORY GROWN DIAMOND REPORT

LG739565979
Report verification at igi.org

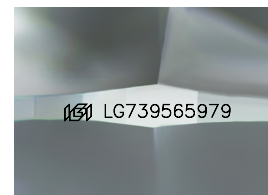
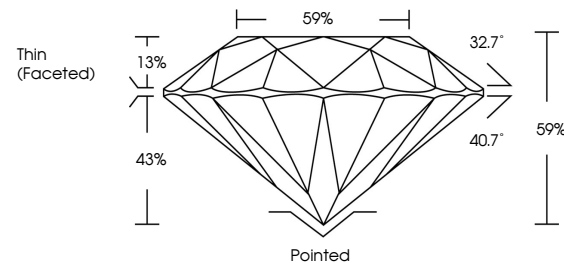
October 7, 2025	
IGI Report Number	LG739565979
Description	LABORATORY GROWN DIAMOND
Shape and Cutting Style	ROUND BRILLIANT
Measurements	9.60 - 9.63 X 5.68 MM
GRADING RESULTS	
Carat Weight	3.17 CARATS
Color Grade	E
Clarity Grade	VVS 2
Cut Grade	EXCELLENT

ADDITIONAL GRADING INFORMATION

Polish	EXCELLENT
Symmetry	EXCELLENT
Fluorescence	NONE
Inscription(s)	 LG739565979

Comments: This Laboratory Grown Diamond was created by Chemical Vapor Deposition (CVD) growth process.
Type IIa

PROPORTIONS



Sample Image Used

COLOR

D E F G H I J Faint Very Light Light

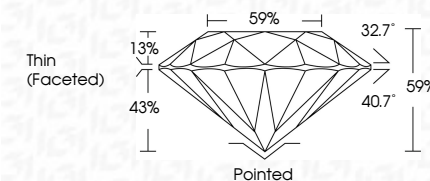
CLARITY

FL	IF	VVS ¹⁻²	VS ¹⁻²	SI ¹⁻²	I ¹⁻³
Flawless	Internally Flawless	Very Very Slightly Included	Very Slightly Included	Slightly Included	Included

LABORATORY GROWN DIAMOND REPORT



October 7, 2025	
IGI Report Number	LG739565979
Description	LABORATORY GROWN DIAMOND
Shape and Cutting Style	ROUND BRILLIANT
Measurements	9.60 - 9.63 X 5.68 MM
GRADING RESULTS	
Carat Weight	3.17 CARATS
Color Grade	E
Clarity Grade	VVS 2
Cut Grade	EXCELLENT



ADDITIONAL GRADING INFORMATION

Polish	EXCELLENT
Symmetry	EXCELLENT
Fluorescence	NONE
Inscription(s)	 LG739565979
<p>Comments: This Laboratory Grown Diamond was created by Chemical Vapor Deposition (CVD) growth process.</p> <p>Type IIa</p>	



© IGI 2020, International Gemological Institute

FD - 10 20



THIS DOCUMENT WAS PRODUCED WITH THE FOLLOWING SECURITY MEASURES: SPECIAL DOCUMENT PAPER, INK SCREENS, WATERMARK, BACKGROUND DESIGNS, HOLOGRAM, AND OTHER SECURITY FEATURES NOT LISTED AND DO EXCEED DOCUMENT SECURITY INDUSTRY GUIDELINES.

www.igi.org

October 7, 2025
IGI Report No LG739565979
ROUND BRILLIANT

9.60 - 9.63 X 5.68 MM	Carat Weight	3.17 CARATS
	Color Grade	E
	Clarity Grade	VVS 2
	Cut Grade	EXCELLENT
	Depth	69%
	Table	59%
	Girdle	Thin (Faceted)
	Culet	Pointed
	Polish	EXCELLENT
	Symmetry	EXCELLENT
	Fluorescence	NONE
	Inspection	AS1 (CT1045670)

Comments:
This Laboratory Grown Diamond was
created by Chemical Vapor Deposition
(CVD) growth process.