



**ELECTRONIC COPY**

LG739562930  
Report verification at igi.org



October 11, 2025

IGI Report Number **LG739562930**

Description **LABORATORY GROWN DIAMOND**

Shape and Cutting Style **EMERALD CUT**

Measurements **10.57 X 7.55 X 4.99 MM**

**GRADING RESULTS**

Carat Weight **3.82 CARATS**

Color Grade **FANCY VIVID PINK**

Clarity Grade **VS 2**

**LABORATORY GROWN DIAMOND REPORT**

October 11, 2025

IGI Report Number **LG739562930**

Description **LABORATORY GROWN DIAMOND**

Shape and Cutting Style **EMERALD CUT**

Measurements **10.57 X 7.55 X 4.99 MM**

**GRADING RESULTS**

Carat Weight **3.82 CARATS**

Color Grade **FANCY VIVID PINK**

Clarity Grade **VS 2**

**ADDITIONAL GRADING INFORMATION**

Polish **VERY GOOD**

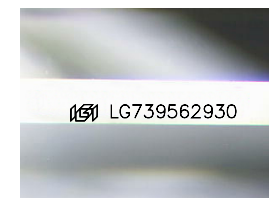
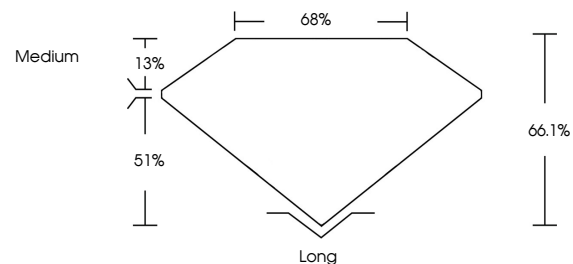
Symmetry **EXCELLENT**

Fluorescence **STRONG**

Inscription(s) **IGI LG739562930**

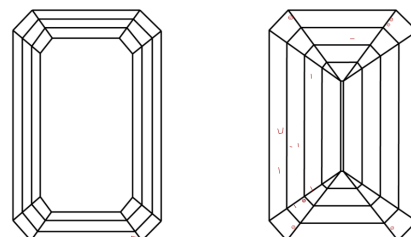
Comments: This Laboratory Grown Diamond was created by Chemical Vapor Deposition (CVD) growth process.  
Indications of post-growth treatment.

**PROPORTIONS**



Sample Image Used

**CLARITY CHARACTERISTICS**



**KEY TO SYMBOLS**

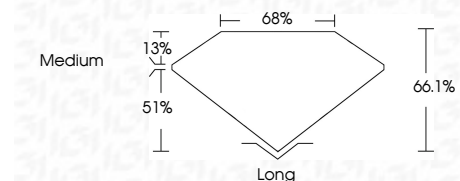
Red symbols indicate internal characteristics.  
Green symbols indicate external characteristics.

**COLOR**

D E F G H I J Faint Very Light Light

**CLARITY**

FL	IF	VS <sup>1-2</sup>	VS <sup>1-2</sup>	SI <sup>1-2</sup>	I <sup>1-3</sup>
Flawless	Internally Flawless	Very Very Slightly Included	Very Slightly Included	Slightly Included	Included



**ADDITIONAL GRADING INFORMATION**

Polish **VERY GOOD**

Symmetry **EXCELLENT**

Fluorescence **STRONG**

Inscription(s) **IGI LG739562930**

Comments: This Laboratory Grown Diamond was created by Chemical Vapor Deposition (CVD) growth process.  
Indications of post-growth treatment.



October 11, 2025  
IGI Report No LG739562930  
EMERALD CUT

3.82 CARATS  
FANCY VIVID PINK

VS 2  
66.1%  
68%

Medium  
Long

VERY GOOD  
EXCELLENT  
STRONG

IGI LG739562930

Comments: This Laboratory Grown Diamond was created by Chemical Vapor Deposition (CVD) growth process.  
Indications of post-growth treatment.