



**ELECTRONIC COPY**

LG739561952  
Report verification at igi.org



October 13, 2025  
IGI Report Number **LG739561952**  
Description **LABORATORY GROWN DIAMOND**  
Shape and Cutting Style **CUT CORNERED  
RECTANGULAR MODIFIED  
BRILLIANT**  
Measurements **7.83 X 5.16 X 3.41 MM**  
**GRADING RESULTS**  
Carat Weight **1.29 CARAT**  
Color Grade **FANCY INTENSE YELLOW**  
Clarity Grade **VS 1**

**LABORATORY GROWN DIAMOND REPORT**

October 13, 2025  
IGI Report Number **LG739561952**  
Description **LABORATORY GROWN DIAMOND**  
Shape and Cutting Style **CUT CORNERED RECTANGULAR  
MODIFIED BRILLIANT**  
Measurements **7.83 X 5.16 X 3.41 MM**

**GRADING RESULTS**

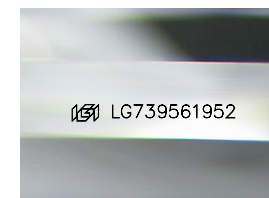
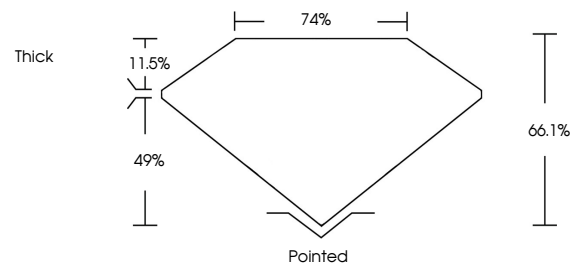
Carat Weight **1.29 CARAT**  
Color Grade **FANCY INTENSE YELLOW**  
Clarity Grade **VS 1**

**ADDITIONAL GRADING INFORMATION**

Polish **VERY GOOD**  
Symmetry **EXCELLENT**  
Fluorescence **NONE**  
Inscription(s) **IGI LG739561952**

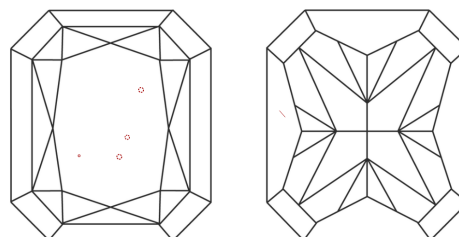
Comments: This Laboratory Grown Diamond was created by Chemical Vapor Deposition (CVD) growth process.

**PROPORTIONS**



Sample Image Used

**CLARITY CHARACTERISTICS**



**KEY TO SYMBOLS**

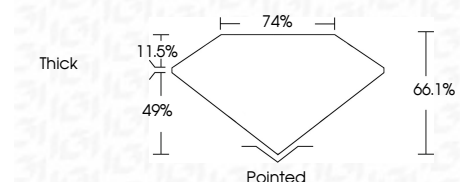
Red symbols indicate internal characteristics.  
Green symbols indicate external characteristics.

**COLOR**

D E F G H I J Faint Very Light Light

**CLARITY**

FL	IF	VS <sup>1-2</sup>	VS <sup>1-2</sup>	SI <sup>1-2</sup>	I <sup>1-3</sup>
Flawless	Internally Flawless	Very Very Slightly Included	Very Slightly Included	Slightly Included	Included



**ADDITIONAL GRADING INFORMATION**

Polish **VERY GOOD**  
Symmetry **EXCELLENT**  
Fluorescence **NONE**  
Inscription(s) **IGI LG739561952**  
Comments: This Laboratory Grown Diamond was created by Chemical Vapor Deposition (CVD) growth process.



**IGI**



October 13, 2025  
IGI Report No LG739561952  
CUT CORNERED RECT. MODIFIED BRILLIANT  
7.83 X 5.16 X 3.41 MM  
1.29 CARAT  
FANCY INTENSE YELLOW  
VS 1  
66.1%  
74%  
Thick  
Pointed  
VERY GOOD  
EXCELLENT  
NONE  
IGI LG739561952

Comments: This Laboratory Grown Diamond was created by Chemical Vapor Deposition (CVD) growth process.