



ELECTRONIC COPY

LG739559180
Report verification at igi.org



October 9, 2025

IGI Report Number **LG739559180**

Description **LABORATORY GROWN DIAMOND**

Shape and Cutting Style **ROUND BRILLIANT**

Measurements **7.45 - 7.47 X 4.46 MM**

GRADING RESULTS

Carat Weight **1.54 CARAT**

Color Grade **FANCY VIVID BLUE**

Clarity Grade **VS 1**

Cut Grade **IDEAL**

October 9, 2025
IGI Report Number **LG739559180**
Description **LABORATORY GROWN DIAMOND**
Shape and Cutting Style **ROUND BRILLIANT**
Measurements **7.45 - 7.47 X 4.46 MM**

GRADING RESULTS

Carat Weight **1.54 CARAT**

Color Grade **FANCY VIVID BLUE**

Clarity Grade **VS 1**

Cut Grade **IDEAL**

ADDITIONAL GRADING INFORMATION

Polish **EXCELLENT**

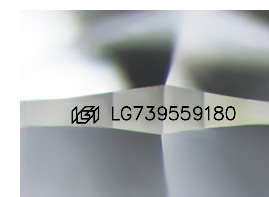
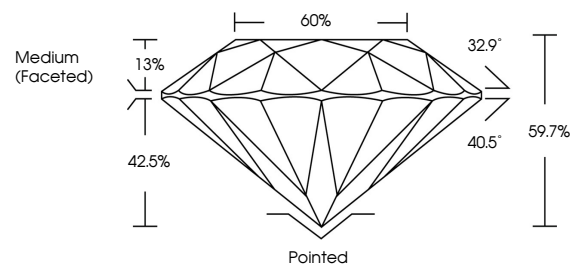
Symmetry **EXCELLENT**

Fluorescence **NONE**

Inscription(s) **LG739559180**

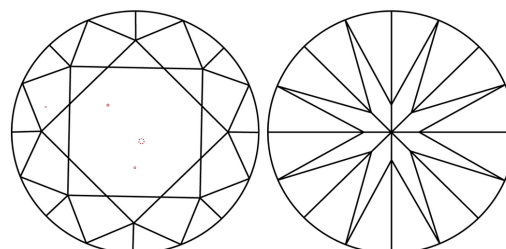
Comments: This Laboratory Grown Diamond was created by Chemical Vapor Deposition (CVD) growth process.
Indications of post-growth treatment.

PROPORTIONS



Sample Image Used

CLARITY CHARACTERISTICS



KEY TO SYMBOLS

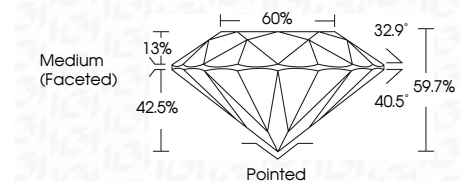
Red symbols indicate internal characteristics.
Green symbols indicate external characteristics.

COLOR

D E F G H I J Faint Very Light Light

CLARITY

FL	IF	VS ¹⁻²	VS ¹⁻²	SI ¹⁻²	I ¹⁻³
Flawless	Internally Flawless	Very Very Slightly Included	Very Slightly Included	Slightly Included	Included



ADDITIONAL GRADING INFORMATION

Polish **EXCELLENT**

Symmetry **EXCELLENT**

Fluorescence **NONE**

Inscription(s) **LG739559180**

Comments: This Laboratory Grown Diamond was created by Chemical Vapor Deposition (CVD) growth process.
Indications of post-growth treatment.



October 9, 2025	1.54 CARAT	VS 1	60%	Pointed
IGI Report No LG739559180	FANCY VIVID BLUE	IDEAL	Medium (Faceted)	EXCELLENT
ROUND BRILLIANT				EXCELLENT
7.45 - 7.47 X 4.46 MM				NONE
Carat Weight				None
Color Grade				None
Clarity Grade				None
Cut Grade				None
Depth				None
Table				None
Grille				None
Culet				None
Polish				None
Symmetry				None
Fluorescence				None
Inscription(s)				None

Comments: This Laboratory Grown Diamond was created by Chemical Vapor Deposition (CVD) growth process.
Indications of post-growth treatment.