



ELECTRONIC COPY

LG739556371
Report verification at igi.org



October 4, 2025

IGI Report Number **LG739556371**

Description **LABORATORY GROWN DIAMOND**

Shape and Cutting Style **ROUND BRILLIANT**

Measurements **10.14 - 10.17 X 6.30 MM**

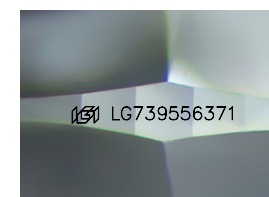
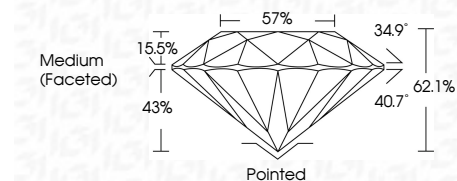
GRADING RESULTS

Carat Weight **4.02 CARATS**

Color Grade **D**

Clarity Grade **VS 2**

Cut Grade **IDEAL**



Sample Image Used

ADDITIONAL GRADING INFORMATION

Polish **EXCELLENT**

Symmetry **EXCELLENT**

Fluorescence **NONE**

Inscription(s) **IGI LG739556371**

Comments: As Grown - No indication of post-growth treatment.

This Laboratory Grown Diamond was created by High Pressure High Temperature (HPHT) growth process.

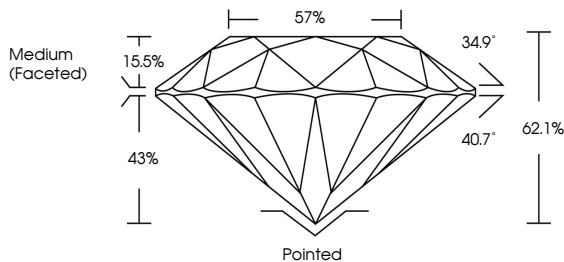
Type II



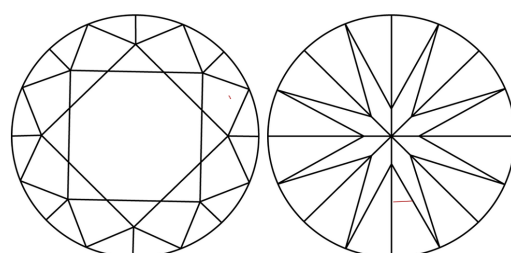
October 4, 2025	IGI Report No LG739556371	4.02 CARATS	D	Pointed
ROUND BRILLIANT	10.14 - 10.17 X 6.30 MM	VS 2	IDEAL	EXCELLENT
Carat Weight	Color Grade	Clarity Grade	Depth	Symmetry
4.02 CARATS	D	VS 2	62.1%	EXCELLENT
		IDEAL	57%	EXCELLENT
			Medium (Faceted)	NONE
				IGI LG739556371

Comments: As Grown - No indication of post-growth treatment. This Laboratory Grown Diamond was created by High Pressure High Temperature (HPHT) growth process. Type II

PROPORTIONS



CLARITY CHARACTERISTICS



KEY TO SYMBOLS

Red symbols indicate internal characteristics.
Green symbols indicate external characteristics.

COLOR

D	E	F	G	H	I	J	Faint	Very Light	Light
---	---	---	---	---	---	---	-------	------------	-------

CLARITY

FL	IF	VS ¹⁻²	VS ¹⁻²	SI ¹⁻²	I ¹⁻³
Flawless	Internally Flawless	Very Very Slightly Included	Very Slightly Included	Slightly Included	Included

