



ELECTRONIC COPY

LABORATORY GROWN DIAMOND REPORT

LG739550428
Report verification at igi.org

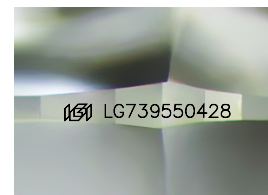
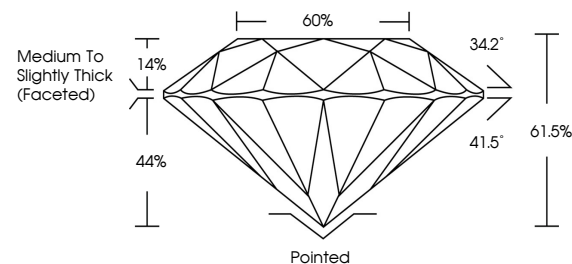
October 3, 2025	
IGI Report Number	LG739550428
Description	LABORATORY GROWN DIAMOND
Shape and Cutting Style	ROUND BRILLIANT
Measurements	6.53 - 6.58 X 4.02 MM
GRADING RESULTS	
Carat Weight	1.05 CARAT
Color Grade	E
Clarity Grade	VVS 2
Cut Grade	IDEAL

ADDITIONAL GRADING INFORMATION

Polish	EXCELLENT
Symmetry	EXCELLENT
Fluorescence	NONE
Inscription(s)	151 LG739550428

Comments: This Laboratory Grown Diamond was created by Chemical Vapor Deposition (CVD) growth process.
Type IIa

PROPORTIONS



Sample Image Used

COLOR

D E F G H I J Faint Very Light Light

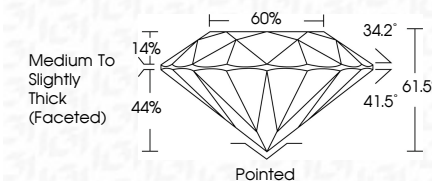
CLARITY

FL	IF	VVS ¹⁻²	VS ¹⁻²	SI ¹⁻²	I ¹⁻³
Flawless	Internally Flawless	Very Very Slightly Included	Very Slightly Included	Slightly Included	Included

LABORATORY GROWN DIAMOND REPORT



October 3, 2025	
IGI Report Number	LG739550428
Description	LABORATORY GROWN DIAMOND
Shape and Cutting Style	ROUND BRILLIANT
Measurements	6.53 - 6.58 X 4.02 MM
GRADING RESULTS	
Carat Weight	1.05 CARAT
Color Grade	E
Clarity Grade	VVS 2
Cut Grade	IDEAL



ADDITIONAL GRADING INFORMATION

Polish	EXCELLENT
Symmetry	EXCELLENT
Fluorescence	NONE
Inscription(s)	 LG739550428
<p>Comments: This Laboratory Grown Diamond was created by Chemical Vapor Deposition (CVD) growth process.</p> <p>Type IIa</p>	



© IGI 2020, International Gemological Institute

FD - 10 20



THIS DOCUMENT WAS PRODUCED WITH THE FOLLOWING SECURITY MEASURES: SPECIAL DOCUMENT PAPER, INK SCREENS, WATERMARK, BACKGROUND DESIGNS, HOLOGRAM AND OTHER SECURITY FEATURES NOT LISTED AND DO EXCEED DOCUMENT SECURITY INDUSTRY GUIDELINES

www.igi.org

October 3, 2025	1.05 CARAT
GI Report No. LG73955028	
ROUND BRILLIANT	
LS-53 - 6.58 X 4.02 MM	
Carat Weight	E
Color Grade	VVS 2
Clarity Grade	IDEAL
Cut Grade	61.5%
Depth	65%
Table	Medium to Slightly Thick (Faceted)
Girdle	Polished
Culet	EXCELLENT
Polish	EXCELLENT
Symmetry	NONE
Fluorescence	1691 LG73955028
Inscriptions(s)	
Comments:	
	Reported by: Crown Diamond was created by Chemical Vapor Deposition (CVD) growth process.
	Type IIa