



ELECTRONIC COPY

LG739545808
Report verification at igi.org



October 8, 2025
IGI Report Number **LG739545808**
Description **LABORATORY GROWN DIAMOND**
Shape and Cutting Style **PRINCESS CUT**
Measurements **12.48 X 12.36 X 8.75 MM**
GRADING RESULTS
Carat Weight **12.02 CARATS**
Color Grade **FANCY VIVID GREEN**
Clarity Grade **VS 1**

LABORATORY GROWN DIAMOND REPORT

October 8, 2025
IGI Report Number **LG739545808**
Description **LABORATORY GROWN DIAMOND**
Shape and Cutting Style **PRINCESS CUT**
Measurements **12.48 X 12.36 X 8.75 MM**

GRADING RESULTS

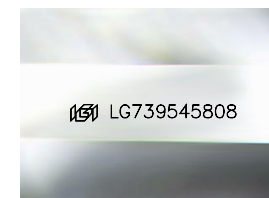
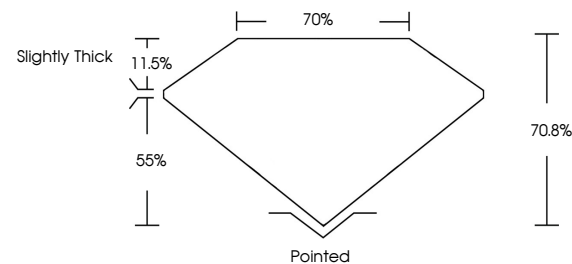
Carat Weight **12.02 CARATS**
Color Grade **FANCY VIVID GREEN**
Clarity Grade **VS 1**

ADDITIONAL GRADING INFORMATION

Polish **EXCELLENT**
Symmetry **EXCELLENT**
Fluorescence **NONE**
Inscription(s) **IGI LG739545808**

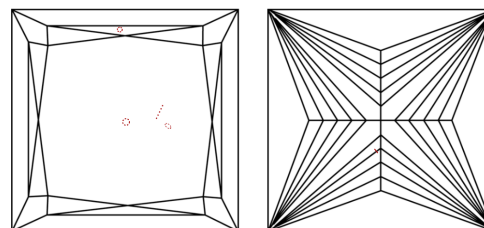
Comments: This Laboratory Grown Diamond was created by Chemical Vapor Deposition (CVD) growth process.
Indications of post-growth treatment.

PROPORTIONS



Sample Image Used

CLARITY CHARACTERISTICS



KEY TO SYMBOLS

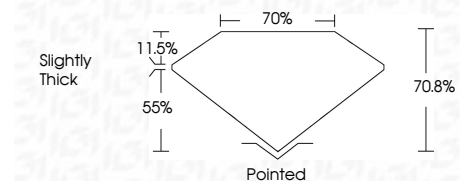
Red symbols indicate internal characteristics.
Green symbols indicate external characteristics.

COLOR

D E F G H I J Faint Very Light Light

CLARITY

FL	IF	VS ¹⁻²	VS ¹⁻²	SI ¹⁻²	I ¹⁻³
Flawless	Internally Flawless	Very Very Slightly Included	Very Slightly Included	Slightly Included	Included



ADDITIONAL GRADING INFORMATION

Polish **EXCELLENT**
Symmetry **EXCELLENT**
Fluorescence **NONE**
Inscription(s) **IGI LG739545808**
Comments: This Laboratory Grown Diamond was created by Chemical Vapor Deposition (CVD) growth process.
Indications of post-growth treatment.



October 8, 2025
IGI Report No **LG739545808**
PRINCESS CUT
12.02 CARATS
Carat Weight **12.48 X 12.36 X 8.75 MM**
Color Grade **FANCY VIVID GREEN**
Clarity Grade **VS 1**
Depth **70.8%**
Table **70%**
Girdle **Slightly Thick**
Culet **Pointed**
Polish **EXCELLENT**
Symmetry **EXCELLENT**
Fluorescence **NONE**
Inscription(s) **IGI LG739545808**
Comments: This Laboratory Grown Diamond was created by Chemical Vapor Deposition (CVD) growth process.
Indications of post-growth treatment.