



**ELECTRONIC COPY**

## LABORATORY GROWN DIAMOND REPORT

October 3, 2025	
IGI Report Number	LG739543196
Description	LABORATORY GROWN DIAMOND
Shape and Cutting Style	ROUND BRILLIANT
Measurements	6.51 - 6.54 X 4.15 MM

## GRADING RESULTS

Carat Weight	1.12 CARAT
Color Grade	D
Clarity Grade	VS 2
Cut Grade	EXCELLENT

### ADDITIONAL GRADING INFORMATION

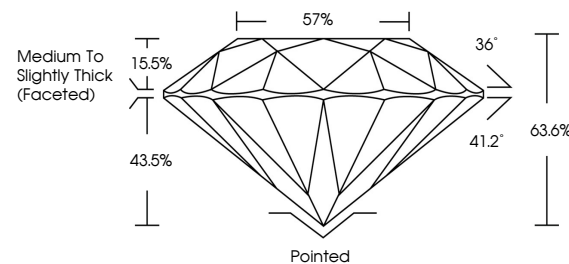
Polish	EXCELLENT
Symmetry	EXCELLENT
Fluorescence	NONE
Inscription(s)	 LG739543196

Comments: As Grown - No indication of post-growth treatment.

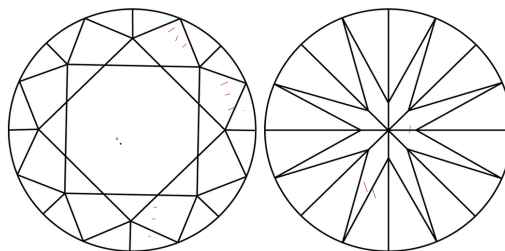
This Laboratory Grown Diamond was created by High Pressure High Temperature (HPHT) growth process.  
Type II

LG739543196  
Report verification at [igi.org](https://igi.org)

## PROPORTIONS

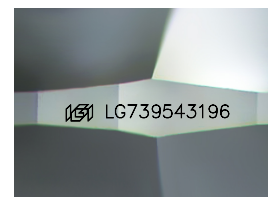


## CLARITY CHARACTERISTICS



## KEY TO SYMBOLS

Red symbols indicate internal characteristics.  
Green symbols indicate external characteristics.



Sample Image Used

## COLOR

D E F G H I J Faint Very Light Light

## CLARITY

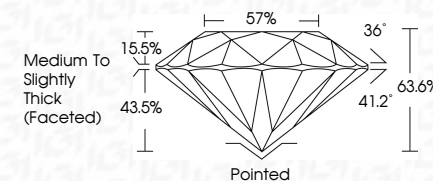
FL	IF	VVS <sup>1-2</sup>	VS <sup>1-2</sup>	SI <sup>1-2</sup>	I <sup>1-3</sup>
Flawless	Internally Flawless	Very Very Slightly Included	Very Slightly Included	Slightly Included	Included



October 3, 2025	
IGI Report Number	LG739543196
Description	LABORATORY GROWN DIAMOND
Shape and Cutting Style	ROUND BRILLIANT
Measurements	6.51 - 6.54 X 4.15 MM

## GRADING RESULTS

Carat Weight	1.12 CARAT
Color Grade	D
Clarity Grade	VS 2
Cut Grade	EXCELLENT



### ADDITIONAL GRADING INFORMATION

Polish	EXCELLENT
Symmetry	EXCELLENT
Fluorescence	NONE
Inscription(s)	<del>LG</del> LG739543196
Comments: As Grown - No indication of post-growth treatment.	
This Laboratory Grown Diamond was created by High Pressure High Temperature (HPHT) growth process.	
Type II	



© IGI 2020, International Gemological Institute

FD - 10 20

**www.igi.org**



THIS DOCUMENT WAS PRODUCED WITH THE FOLLOWING SECURITY MEASURES: SPECIAL DOCUMENT PAPER, INK SCREENS, WATERMARK, BACKGROUND DESIGNS, HOLOGRAM AND OTHER SECURITY FEATURES NOT LISTED AND DO EXCEED DOCUMENT SECURITY INDUSTRY GUIDELINE

	October 9, 2026
	<b>GIA Report No. L67895643196</b>
<b>ROUND BRILLIANT</b>	
<b>ROUND - 6.51 - 6.54 X 4.15 MM</b>	
Carat Weight	1.12 CARAT D
Color Grade	VS 2
Clarity Grade	EXCELLENT
Cut Grade	63.6%
Depth	57%
Table	
Girdle	Medium to slightly thick (faced)
Culet	Poined
Polish	EXCELLENT
Symmetry	EXCELLENT
Fluorescence	NONE
Inscription(s)	L67895643196

Comments:  
As Grown - No indication of post-growth treatment.  
The Laboratory Grown Diamond was created by High Pressure High Temperature (HPHT) growth process.