

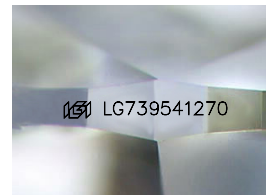
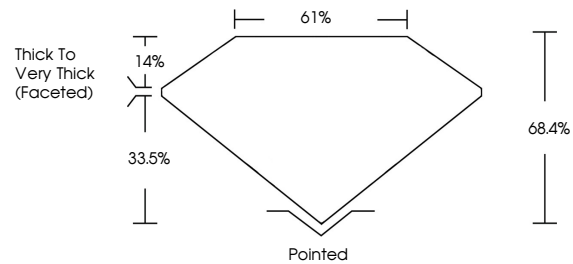


**INTERNATIONAL
GEMOLOGICAL
INSTITUTE**

ELECTRONIC COPY

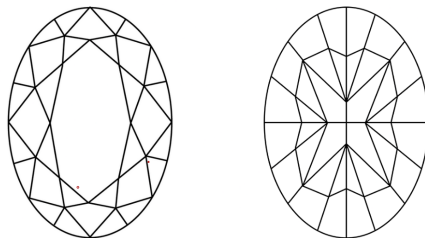
LG739541270
Report verification at igi.org

PROPORTIONS



Sample Image Used

CLARITY CHARACTERISTICS



KEY TO SYMBOLS

Red symbols indicate internal characteristics.
Green symbols indicate external characteristics.

COLOR

D E F G H I J Faint Very Light Light

CLARITY

FL	IF	VVS ¹⁻²	VS ¹⁻²	SI ¹⁻²	I ¹⁻³
Flawless	Internally Flawless	Very Very Slightly Included	Very Slightly Included	Slightly Included	Included

© IGI 2020, International Gemological Institute

FD - 10 20

www.igi.org

THIS DOCUMENT WAS PRODUCED WITH THE FOLLOWING SECURITY MEASURES: SPECIAL DOCUMENT PAPER, INK SCREENS, WATERMARK BACKGROUND DESIGNS, HOLOGRAM AND OTHER SECURITY FEATURES NOT LISTED AND DO EXCEED DOCUMENT SECURITY INDUSTRY GUIDELINES.

LABORATORY GROWN DIAMOND REPORT



October 11, 2025

IGI Report Number **LG739541270**

Description	LABORATORY GROWN DIAMOND
-------------	--------------------------

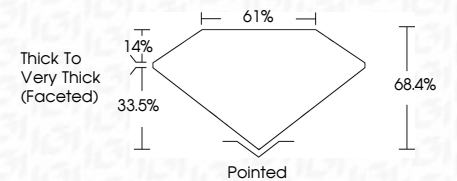
Shape and Cutting Style **OVAL MODIFIED BRILLIANT**

Measurements	8.57 X 6.40 X 4.38 MM
--------------	-----------------------

GRADING RESULTS

Carat Weight **2.01 CARATS**

Color Grade **FANCY INTENSE YELLOW**

Clarity Grade **VVS 2**

ADDITIONAL GRADING INFORMATION

Polish **EXCELLENT**Symmetry **EXCELLENT**Fluorescence **NONE**Inscription(s) LG739541270

Comments: This Laboratory Grown Diamond was created by Chemical Vapor Deposition (CVD) growth process.



IGI

October 11, 2025	2.01 CARATS
IGI Report No. LG795641270	FANCY INTENSE YELLOW
LOI MODIFIED BRILLIANT	
6.57 X 6.40 X 4.38 MM	
Color Weight	
Carat Grade	VVS 2
Clarity Grade	68.4%
Depth	61%
Table	Thick to Very Thick
Girdle	(Faceted)
Culet	Pointed
Polish	EXCELLENT
Symmetry	EXCELLENT
Fluorescence	NONE
Inscriptions	IGI LG795641270
Comments:	
This Laboratory Grown Diamond was created by Chemical Vapor Deposition (CVD) growth process.	

This Laboratory Grown Diamond was created by Chemical Vapor Deposition (CVD) growth process.