



ELECTRONIC COPY

LG739541259
Report verification at igi.org



October 11, 2025
IGI Report Number **LG739541259**
Description **LABORATORY GROWN DIAMOND**
Shape and Cutting Style **SQUARE CUSHION MODIFIED BRILLIANT**
Measurements **7.81 X 7.79 X 5.02 MM**
GRADING RESULTS
Carat Weight **2.81 CARATS**
Color Grade **FANCY INTENSE YELLOW**
Clarity Grade **SI 1**

October 11, 2025
IGI Report Number **LG739541259**
Description **LABORATORY GROWN DIAMOND**
Shape and Cutting Style **SQUARE CUSHION MODIFIED BRILLIANT**
Measurements **7.81 X 7.79 X 5.02 MM**

GRADING RESULTS

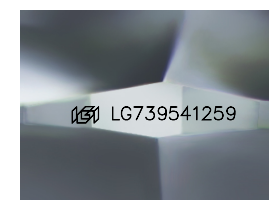
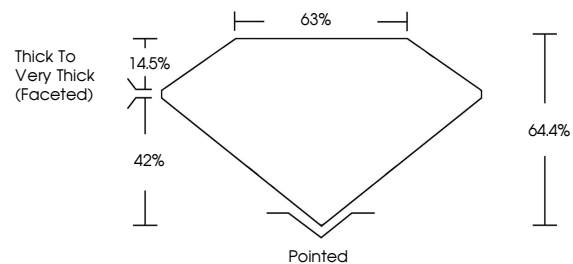
Carat Weight **2.81 CARATS**
Color Grade **FANCY INTENSE YELLOW**
Clarity Grade **SI 1**

ADDITIONAL GRADING INFORMATION

Polish **EXCELLENT**
Symmetry **EXCELLENT**
Fluorescence **NONE**
Inscription(s) **IGI LG739541259**

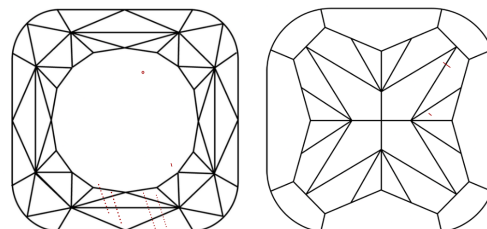
Comments: This Laboratory Grown Diamond was created by Chemical Vapor Deposition (CVD) growth process.

PROPORTIONS



Sample Image Used

CLARITY CHARACTERISTICS



KEY TO SYMBOLS

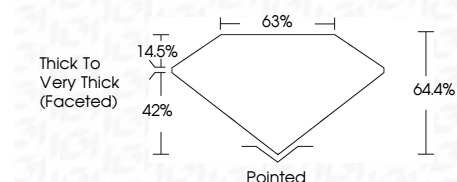
Red symbols indicate internal characteristics.
Green symbols indicate external characteristics.

COLOR

D E F G H I J Faint Very Light Light

CLARITY

FL	IF	VS ¹⁻²	VS ¹⁻²	SI ¹⁻²	I ¹⁻³
Flawless	Internally Flawless	Very Very Slightly Included	Very Slightly Included	Slightly Included	Included



ADDITIONAL GRADING INFORMATION

Polish **EXCELLENT**
Symmetry **EXCELLENT**
Fluorescence **NONE**
Inscription(s) **IGI LG739541259**
Comments: This Laboratory Grown Diamond was created by Chemical Vapor Deposition (CVD) growth process.



October 11, 2025
IGI Report No LG739541259
SQUARE CUSHION MODIFIED BRILLIANT
7.81 X 7.79 X 5.02 MM
2.81 CARATS
FANCY INTENSE YELLOW
SI 1
64.4%
63%
Thick to Very Thick (Faceted)
Pointed
EXCELLENT
EXCELLENT
NONE
IGI LG739541259
Comments: This Laboratory Grown Diamond was created by Chemical Vapor Deposition (CVD) growth process.