



ELECTRONIC COPY

LG739540679
Report verification at igi.org



October 10, 2025
IGI Report Number **LG739540679**
Description **LABORATORY GROWN DIAMOND**
Shape and Cutting Style **KITE MODIFIED BRILLIANT**
Measurements **12.79 X 8.28 X 5.12 MM**
GRADING RESULTS
Carat Weight **2.38 CARATS**
Color Grade **E**
Clarity Grade **INTERNALLY FLAWLESS**

LABORATORY GROWN DIAMOND REPORT

October 10, 2025
IGI Report Number **LG739540679**
Description **LABORATORY GROWN DIAMOND**
Shape and Cutting Style **KITE MODIFIED BRILLIANT**
Measurements **12.79 X 8.28 X 5.12 MM**

GRADING RESULTS

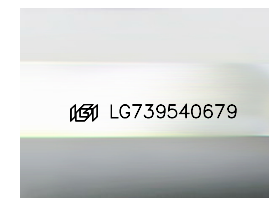
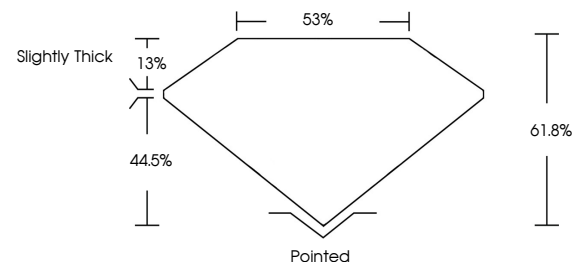
Carat Weight **2.38 CARATS**
Color Grade **E**
Clarity Grade **INTERNALLY FLAWLESS**

ADDITIONAL GRADING INFORMATION

Polish **EXCELLENT**
Symmetry **EXCELLENT**
Fluorescence **NONE**
Inscription(s) **IGI LG739540679**

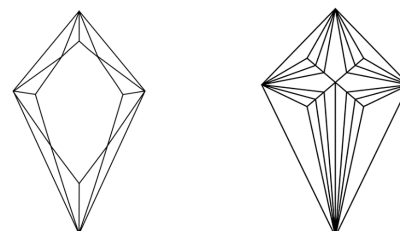
Comments: This Laboratory Grown Diamond was created by Chemical Vapor Deposition (CVD) growth process.
Type IIa

PROPORTIONS



Sample Image Used

CLARITY CHARACTERISTICS



KEY TO SYMBOLS

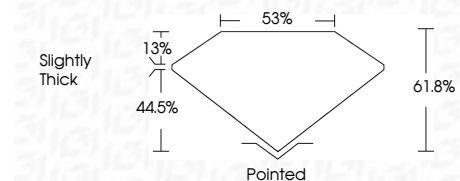
Red symbols indicate internal characteristics.
Green symbols indicate external characteristics.

COLOR

D E F G H I J Faint Very Light Light

CLARITY

FL	IF	VS ¹⁻²	VS ¹⁻²	SI ¹⁻²	I ¹⁻³
Flawless	Internally Flawless	Very Very Slightly Included	Very Slightly Included	Slightly Included	Included



ADDITIONAL GRADING INFORMATION

Polish **EXCELLENT**
Symmetry **EXCELLENT**
Fluorescence **NONE**
Inscription(s) **IGI LG739540679**
Comments: This Laboratory Grown Diamond was created by Chemical Vapor Deposition (CVD) growth process.
Type IIa



October 10, 2025
IGI Report No **LG739540679**
KITE MODIFIED BRILLIANT
12.79 X 8.28 X 5.12 MM
Carat Weight **2.38 CARATS**
Color Grade **E**
Clarity Grade **IF**
Depth **61.8%**
Table **53%**
Girdle **Slightly Thick**
Culet **Pointed**
Polish **EXCELLENT**
Symmetry **EXCELLENT**
Fluorescence **NONE**
Inscription(s) **IGI LG739540679**
Comments: This Laboratory Grown Diamond was created by Chemical Vapor Deposition (CVD) growth process.
Type IIa