



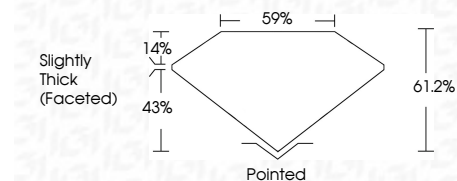
**ELECTRONIC COPY**

LG739539317  
Report verification at igi.org



October 13, 2025  
IGI Report Number **LG739539317**  
Description **LABORATORY GROWN DIAMOND**  
Shape and Cutting Style **ROUND MODIFIED BRILLIANT**  
Measurements **7.25 - 7.27 X 4.44 MM**

**GRADING RESULTS**  
Carat Weight **1.47 CARAT**  
Color Grade **F**  
Clarity Grade **VS 1**

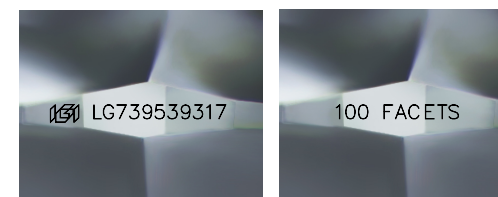


**ADDITIONAL GRADING INFORMATION**  
Polish **EXCELLENT**  
Symmetry **EXCELLENT**  
Fluorescence **NONE**  
Inscription(s) **IGI LG739539317  
100 FACETS**

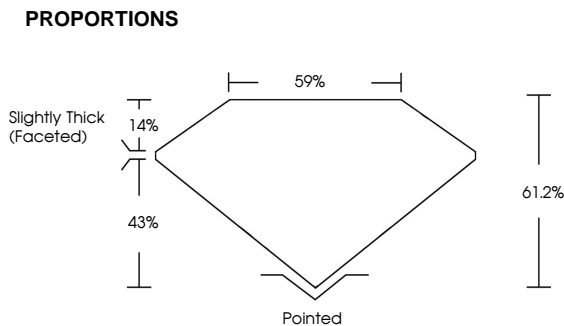
Comments: This Laboratory Grown Diamond was created by Chemical Vapor Deposition (CVD) growth process. Type IIa



October 13, 2025  
IGI Report No **LG739539317**  
**ROUND MODIFIED BRILLIANT**  
7.25 - 7.27 X 4.44 MM  
Carat Weight **1.47 CARAT**  
Color Grade **F**  
Clarity Grade **VS 1**  
Depth **61.2%**  
Table **59%**  
Girdle **Slightly Thick (Faceted)**  
Culet **Pointed**  
Polish **EXCELLENT**  
Symmetry **EXCELLENT**  
Fluorescence **NONE**  
Inscription(s) **IGI LG739539317 100 FACETS**  
Comments: This Laboratory Grown Diamond was created by Chemical Vapor Deposition (CVD) growth process. Type IIa



Sample Images Used



**COLOR**

|   |   |   |   |   |   |   |       |            |       |
|---|---|---|---|---|---|---|-------|------------|-------|
| D | E | F | G | H | I | J | Faint | Very Light | Light |
|---|---|---|---|---|---|---|-------|------------|-------|

**CLARITY**

|          |                     |                             |                        |                   |                  |
|----------|---------------------|-----------------------------|------------------------|-------------------|------------------|
| FL       | IF                  | VS <sup>1-2</sup>           | VS <sup>1-2</sup>      | SI <sup>1-2</sup> | I <sup>1-3</sup> |
| Flawless | Internally Flawless | Very Very Slightly Included | Very Slightly Included | Slightly Included | Included         |



October 13, 2025  
IGI Report Number **LG739539317**  
Description **LABORATORY GROWN DIAMOND**  
Shape and Cutting Style **ROUND MODIFIED BRILLIANT**  
Measurements **7.25 - 7.27 X 4.44 MM**  
**GRADING RESULTS**  
Carat Weight **1.47 CARAT**  
Color Grade **F**  
Clarity Grade **VS 1**  
**ADDITIONAL GRADING INFORMATION**  
Polish **EXCELLENT**  
Symmetry **EXCELLENT**  
Fluorescence **NONE**  
Inscription(s) **IGI LG739539317  
100 FACETS**

Comments: This Laboratory Grown Diamond was created by Chemical Vapor Deposition (CVD) growth process. Type IIa