



ELECTRONIC COPY

LABORATORY GROWN DIAMOND REPORT

October 6, 2025	
IGI Report Number	LG739535771
Description	LABORATORY GROWN DIAMOND
Shape and Cutting Style	PRINCESS CUT
Measurements	5.45 X 5.41 X 3.97 MM

GRADING RESULTS

Carat Weight	1.07 CARAT
Color Grade	D
Clarity Grade	VVS 2

ADDITIONAL GRADING INFORMATION

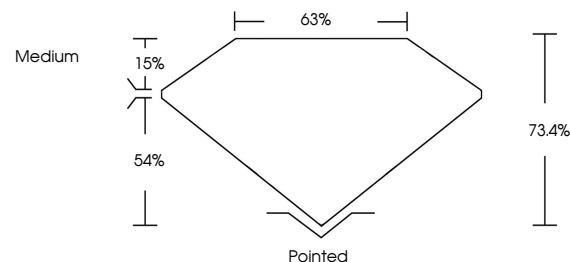
Polish	VERY GOOD
Symmetry	VERY GOOD
Fluorescence	NONE
Inscription(s)	151 LG739535771

Comments: As Grown - No indication of post-growth treatment.

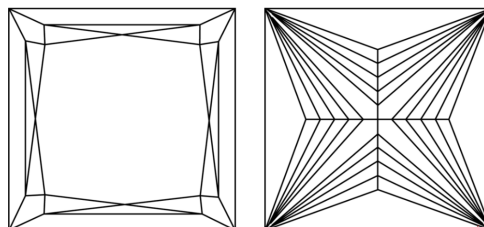
This Laboratory Grown Diamond was created by High Pressure High Temperature (HPHT) growth process.
Type II

LG739535771
Report verification at igi.org

PROPORTIONS

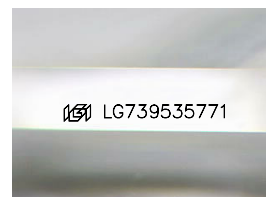


CLARITY CHARACTERISTICS



KEY TO SYMBOLS

Red symbols indicate internal characteristics.
Green symbols indicate external characteristics.



Sample Image Used

COLOR

D E F G H I J Faint Very Light Light

CLARITY

FL	IF	VVS ¹⁻²	VS ¹⁻²	SI ¹⁻²	I ¹⁻³
Flawless	Internally Flawless	Very Very Slightly Included	Very Slightly Included	Slightly Included	Included

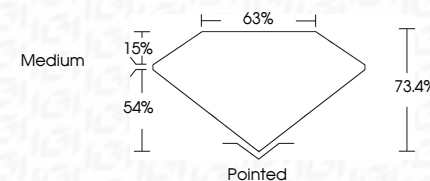
LABORATORY GROWN DIAMOND REPORT



October 6, 2025	
IGI Report Number	LG739535771
Description	LABORATORY GROWN DIAMOND
Shape and Cutting Style	PRINCESS CUT
Measurements	5.45 X 5.41 X 3.97 MM

GRADING RESULTS

Carat Weight	1.07 CARAT
Color Grade	D
Clarity Grade	VVS 2



ADDITIONAL GRADING INFORMATION

Polish	VERY GOOD
Symmetry	VERY GOOD
Fluorescence	NONE
Inscription(s)	18 LG73953577

Comments: As Grown - No indication of post-growth treatment.

This Laboratory Grown Diamond was created by High Pressure High Temperature (HPHT) growth process.



October 6, 2025
 LGI Report No LG739535771

PRINCESS CUT		5.46 X 5.41 X 3.97 MM	1.07 CARAT
Carat Weight			
Color Grade			D
Clarity Grade			VVS 2
Depth			73.6%
Table			63%
Girdle			Medium
Culet			Pointed
Polish			VERY GOOD
Symmetry			VERY GOOD
Fluorescence			NONE
Report # 13796858771			

Comments:
As Grown - No indication of post-growth treatment.
This Laboratory Grown Diamond was created by High Pressure High temperature (HPHT) growth process.

