



# INTERNATIONAL GEMOLOGICAL INSTITUTE

## LABORATORY GROWN DIAMOND REPORT

October 4, 2025  
IGI Report Number **LG739535397**  
Description **LABORATORY GROWN DIAMOND**  
Shape and Cutting Style **PRINCESS CUT**  
Measurements **5.43 X 5.33 X 3.73 MM**

### GRADING RESULTS

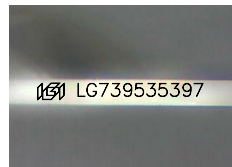
Carat Weight **0.93 CARAT**  
Color Grade **D**  
Clarity Grade **VVS 2**

### ADDITIONAL GRADING INFORMATION

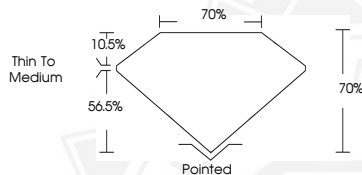
Polish **EXCELLENT**  
Symmetry **EXCELLENT**  
Fluorescence **NONE**  
Inscription(s) **IGI LG739535397**

Comments: This Laboratory Grown Diamond was created by  
Chemical Vapor Deposition (CVD) growth process.  
Type IIa

ELECTRONIC COPY



Sample Image Used



October 4, 2025  
IGI Report Number **LG739535397**  
**PRINCESS CUT**  
**LABORATORY GROWN DIAMOND**  
**5.43 X 5.33 X 3.73 MM**  
Carat Weight **0.93 CARAT**  
Color Grade **D**  
Clarity Grade **VVS 2**  
Polish **EXCELLENT**  
Symmetry **EXCELLENT**  
Fluorescence **NONE**  
Inscription(s) **IGI LG739535397**  
Comments: This Laboratory Grown  
Diamond was created by  
Chemical Vapor Deposition (CVD)  
growth process. Type IIa



October 4, 2025  
IGI Report Number **LG739535397**  
**PRINCESS CUT**  
**LABORATORY GROWN DIAMOND**  
**5.43 X 5.33 X 3.73 MM**  
Carat Weight **0.93 CARAT**  
Color Grade **D**  
Clarity Grade **VVS 2**  
Polish **EXCELLENT**  
Symmetry **EXCELLENT**  
Fluorescence **NONE**  
Inscription(s) **IGI LG739535397**  
Comments: This Laboratory Grown  
Diamond was created by  
Chemical Vapor Deposition (CVD)  
growth process. Type IIa



THIS DOCUMENT WAS PRODUCED WITH THE FOLLOWING SECURITY MEASURES: SPECIAL DOCUMENT PAPER, INK SCREENS, WATERMARK, BACKGROUND DESIGNS, HOLOGRAM AND OTHER SECURITY FEATURES NOT LISTED AND DO EXCEED DOCUMENT SECURITY INDUSTRY GUIDELINES.

For terms & conditions and to verify this report, please visit [www.igi.org](http://www.igi.org)