



**ELECTRONIC COPY**

## LABORATORY GROWN DIAMOND REPORT

October 2, 2025	
IGI Report Number	LG739534922
Description	LABORATORY GROWN DIAMOND
Shape and Cutting Style	ROUND BRILLIANT
Measurements	10.23 - 10.29 X 6.21 MM

## GRADING RESULTS

Carat Weight	4.02 CARATS
Color Grade	E
Clarity Grade	INTERNALLY FLAWLESS
Cut Grade	IDEAL

### ADDITIONAL GRADING INFORMATION

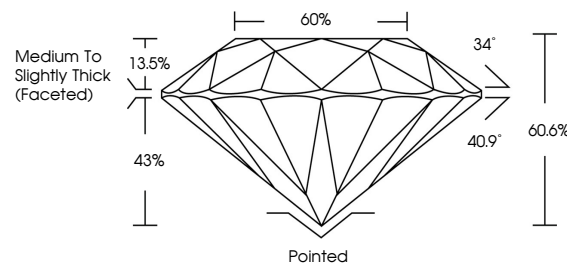
Polish	EXCELLENT
Symmetry	EXCELLENT
Fluorescence	NONE
Inscription(s)	 LG739534922

Comments: As Grown - No indication of post-growth treatment.

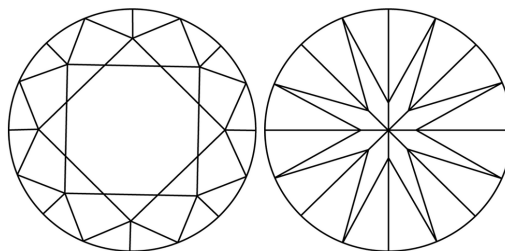
This Laboratory Grown Diamond was created by High Pressure High Temperature (HPHT) growth process.  
Type II

LG739534922  
Report verification at [igi.org](https://igi.org)

## PROPORTIONS

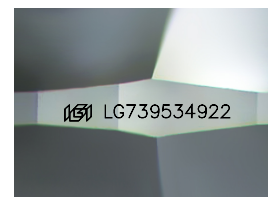


## CLARITY CHARACTERISTICS



## KEY TO SYMBOLS

Red symbols indicate internal characteristics.  
Green symbols indicate external characteristics.



Sample Image Used

## COLOR

D E F G H I J Faint Very Light Light

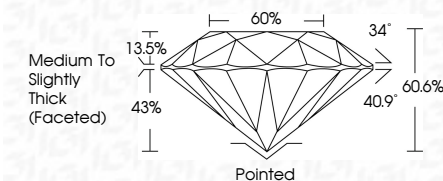
## CLARITY

FL	IF	VVS <sup>1-2</sup>	VS <sup>1-2</sup>	SI <sup>1-2</sup>	I <sup>1-3</sup>
Flawless	Internally Flawless	Very Very Slightly Included	Very Slightly Included	Slightly Included	Included

## LABORATORY GROWN DIAMOND REPORT



October 2, 2025	
IGI Report Number	LG739534922
Description	LABORATORY GROWN DIAMOND
Shape and Cutting Style	ROUND BRILLIANT
Measurements	10.23 - 10.29 X 6.21 MM
GRADING RESULTS	
Carat Weight	4.02 CARATS
Color Grade	E
Clarity Grade	INTERNALLY FLAWLESS
Cut Grade	IDEAL



### ADDITIONAL GRADING INFORMATION

Polish	EXCELLENT
Symmetry	EXCELLENT
Fluorescence	NONE
Inscription(s)	<del>(G)</del> LG739534922
Comments:	As Grown - No indication of post-growth treatment.
This Laboratory Grown Diamond was created by High Pressure High Temperature (HPHT) growth process.	
Type II	



© IGI 2020, International Gemological Institute

FD - 10 20



THIS DOCUMENT WAS PRODUCED WITH THE FOLLOWING SECURITY MEASURES: SPECIAL DOCUMENT PAPER, INK SCREENS, WATERMARK, BACKGROUND DESIGNS, HOLOGRAM AND OTHER SECURITY FEATURES NOT LISTED AND DO EXCEED DOCUMENT SECURITY INDUSTRY GUIDELINES

**www.igi.org**

<b>October 2, 2026</b>	
<b>GJ Report No LG79534922</b>	
<b>ROUND BRILLIANT</b>	
<b>10.23 - 10.29 X &amp; 21 MM</b>	
<b>Carat Weight</b>	<b>4.02 CARATS</b>
<b>Color Grade</b>	<b>E</b>
<b>Clarity Grade</b>	<b>I<sub>F</sub></b>
<b>Cut Grade</b>	<b>IDEAL</b>
<b>Depth</b>	<b>60.6%</b>
<b>Table</b>	<b>65%</b>
<b>Girdle</b>	<b>Medium to Slightly Thick (Faceted)</b>
<b>Culet</b>	<b>Poished</b>
<b>Polish</b>	<b>EXCELLENT</b>
<b>Symmetry</b>	<b>EXCELLENT</b>
<b>Fluorescence Inscriptions(s)</b>	<b>NONE</b>
<b>Comments:</b>	<b>#89 LG79534922</b>
<b>A's Grown - No indication of post-growth treatment.</b>	
<b>B's Treated by High Pressure Growth Diamond was treated by High Pressure High temperature (HPHT) growth process.</b>	
<b>Type II</b>	