



**ELECTRONIC COPY**

LG739533050  
Report verification at igi.org



October 10, 2025  
IGI Report Number **LG739533050**  
Description **LABORATORY GROWN DIAMOND**  
Shape and Cutting Style **ROUND BRILLIANT**  
Measurements **11.13 - 11.17 X 6.96 MM**  
**GRADING RESULTS**  
Carat Weight **5.42 CARATS**  
Color Grade **FANCY INTENSE YELLOW**  
Clarity Grade **VS 2**  
Cut Grade **IDEAL**

October 10, 2025  
IGI Report Number **LG739533050**  
Description **LABORATORY GROWN DIAMOND**  
Shape and Cutting Style **ROUND BRILLIANT**  
Measurements **11.13 - 11.17 X 6.96 MM**

**GRADING RESULTS**

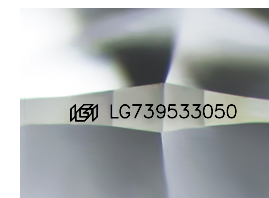
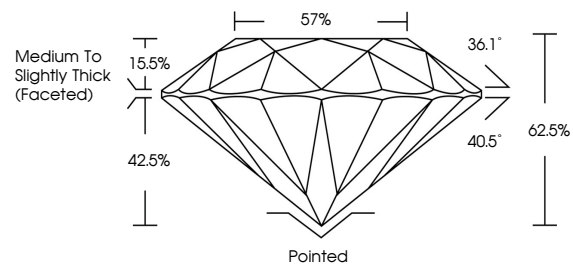
Carat Weight **5.42 CARATS**  
Color Grade **FANCY INTENSE YELLOW**  
Clarity Grade **VS 2**  
Cut Grade **IDEAL**

**ADDITIONAL GRADING INFORMATION**

Polish **EXCELLENT**  
Symmetry **EXCELLENT**  
Fluorescence **VERY SLIGHT**  
Inscription(s) **LG739533050**

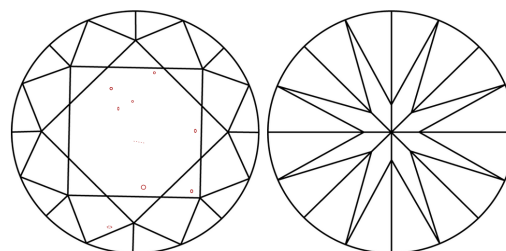
Comments: This Laboratory Grown Diamond was created by Chemical Vapor Deposition (CVD) growth process.  
Indications of post-growth treatment.

**PROPORTIONS**



Sample Image Used

**CLARITY CHARACTERISTICS**



**KEY TO SYMBOLS**

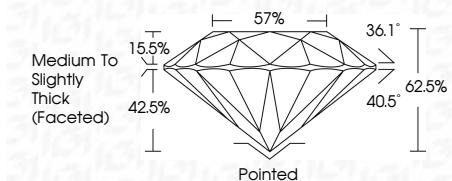
Red symbols indicate internal characteristics.  
Green symbols indicate external characteristics.

**COLOR**

D E F G H I J Faint Very Light Light

**CLARITY**

FL	IF	VS <sup>1-2</sup>	VS <sup>1-2</sup>	SI <sup>1-2</sup>	I <sup>1-3</sup>
Flawless	Internally Flawless	Very Very Slightly Included	Very Slightly Included	Slightly Included	Included



**ADDITIONAL GRADING INFORMATION**

Polish **EXCELLENT**  
Symmetry **EXCELLENT**  
Fluorescence **VERY SLIGHT**  
Inscription(s) **LG739533050**  
Comments: This Laboratory Grown Diamond was created by Chemical Vapor Deposition (CVD) growth process.  
Indications of post-growth treatment.



**IGI**



October 10, 2025  
IGI Report No **LG739533050**  
**ROUND BRILLIANT**  
11.13 - 11.17 X 6.96 MM  
Carat Weight **5.42 CARATS**  
Color Grade **FANCY INTENSE YELLOW**  
Clarity Grade **VS 2**  
Cut Grade **IDEAL**  
Depth **62.5%**  
Table **57%**  
Girdle **Medium To Slightly Thick (Faceted)**  
Culet **Pointed**  
Polish **EXCELLENT**  
Symmetry **EXCELLENT**  
Fluorescence **VERY SLIGHT**  
Inscription(s) **LG739533050**  
Comments: This Laboratory Grown Diamond was created by Chemical Vapor Deposition (CVD) growth process.  
Indications of post-growth treatment.