



## LABORATORY GROWN DIAMOND REPORT

## GRADING RESULTS

### ADDITIONAL GRADING INFORMATION

Inscription(s)  LG739529595

This Laboratory Grown Diamond was created by High Pressure High Temperature (HPHT) growth process.  
Type II

LG739529595  
Report verification at [igi.org](https://igi.org)

Diagram illustrating the cross-section of a diamond-shaped structure, likely a lens or a specialized component. The dimensions and labels are as follows:

- Top Width:** 61%
- Left Side Label:** Medium To Slightly Thick (Faceted)
- Left Side Dimensions:** 13% (top segment), 45.5% (bottom segment)
- Right Side Dimension:** 62.7% (height)
- Bottom Label:** Pointed

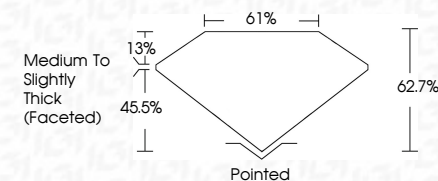
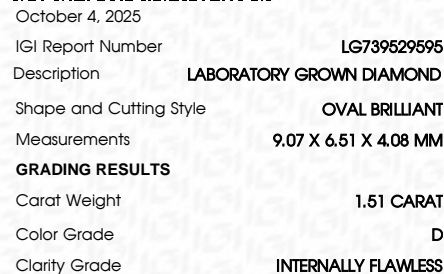
Red symbols indicate internal characteristics.  
Green symbols indicate external characteristics.



D E F G H I J      Faint      Very Light      Light

FL IF WS<sup>1-2</sup> VS<sup>1-2</sup> S<sup>1-2</sup> |<sup>1-3</sup>

Flawless	Internally Flawless	Very Very Slightly Included	Very Slightly Included	Slightly Included	Included
----------	---------------------	-----------------------------	------------------------	-------------------	----------



Polish	EXCELLEN
Symmetry	EXCELLEN
Fluorescence	NON
Inscription(s)	151 LG73952959

Comments: As Grown - No indication of post-growth treatment.  
This Laboratory Grown Diamond was created by High Pressure High Temperature (HPHT) growth process.  
Type II



FD - 10 20



THIS DOCUMENT WAS PRODUCED WITH THE FOLLOWING SECURITY MEASURES: SPECIAL DOCUMENT PAPER, INK SCREENS, WATERMARK, BACKGROUND DESIGNS, HOLOGRAM AND OTHER SECURITY FEATURES NOT LISTED AND DO EXCEED DOCUMENT SECURITY INDUSTRY GUIDELINE

October 4, 2025  
 LGI Report No LG739529595

Report No. LG79525995	9.07 X 6.51 X 4.08 MM	1.51 CARAT	LF	62.7%	61%	Medium to Slightly Thick (received)	Pointed	EXCELLENT	EXCELLENT	NONE	seen (2/25/2016)
Color Grade	Clarity Grade	Depth	Table	Grade	Polish	Symmetry	Fluorescence				

**Comments:**  
As Grown - No Indication of post-growth treatment.  
This Laboratory Grown Diamond was created by High Pressure High temperature (HPHT) growth process.