



ELECTRONIC COPY

LG739527374
Report verification at igi.org



October 8, 2025

IGI Report Number **LG739527374**

Description **LABORATORY GROWN DIAMOND**

Shape and Cutting Style **SQUARE EMERALD CUT**

Measurements **6.26 X 6.23 X 3.98 MM**

GRADING RESULTS

Carat Weight **1.53 CARAT**

Color Grade **FANCY VIVID BLUE**

Clarity Grade **VS 1**

October 8, 2025
IGI Report Number **LG739527374**
Description **LABORATORY GROWN DIAMOND**
Shape and Cutting Style **SQUARE EMERALD CUT**
Measurements **6.26 X 6.23 X 3.98 MM**

GRADING RESULTS

Carat Weight **1.53 CARAT**

Color Grade **FANCY VIVID BLUE**

Clarity Grade **VS 1**

ADDITIONAL GRADING INFORMATION

Polish **EXCELLENT**

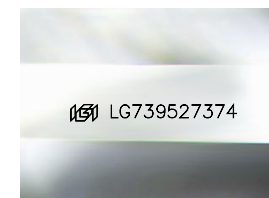
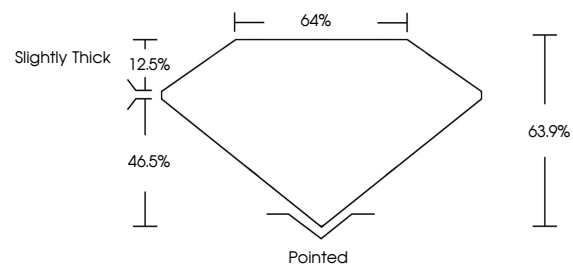
Symmetry **EXCELLENT**

Fluorescence **NONE**

Inscription(s) **IGI LG739527374**

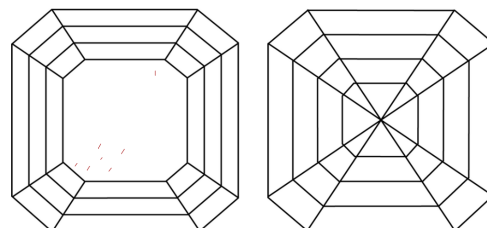
Comments: This Laboratory Grown Diamond was created by High Pressure High Temperature (HPHT) growth process. Indications of post-growth treatment.

PROPORTIONS



Sample Image Used

CLARITY CHARACTERISTICS



KEY TO SYMBOLS

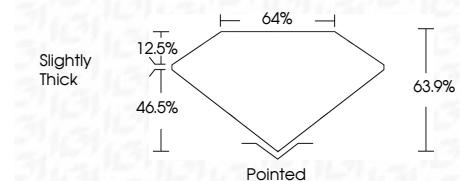
Red symbols indicate internal characteristics.
Green symbols indicate external characteristics.

COLOR

D E F G H I J Faint Very Light Light

CLARITY

FL	IF	VS ¹⁻²	VS ¹⁻²	SI ¹⁻²	I ¹⁻³
Flawless	Internally Flawless	Very Very Slightly Included	Very Slightly Included	Slightly Included	Included



ADDITIONAL GRADING INFORMATION

Polish **EXCELLENT**

Symmetry **EXCELLENT**

Fluorescence **NONE**

Inscription(s) **IGI LG739527374**

Comments: This Laboratory Grown Diamond was created by High Pressure High Temperature (HPHT) growth process. Indications of post-growth treatment.



IGI



October 8, 2025	1.53 CARAT
IGI Report No LG739527374	FANCY VIVID BLUE
SQUARE EMERALD CUT	VS 1
6.26 X 6.23 X 3.98 MM	63.9%
Carat Weight	64%
Color Grade	Slightly Thick
Clarity Grade	Pointed
Depth	EXCELLENT
Table	EXCELLENT
Graile	NONE
Culet	None
Polish	EXCELLENT
Symmetry	EXCELLENT
Fluorescence	NONE
Inscription(s)	IGI LG739527374

Comments: This Laboratory Grown Diamond was created by High Pressure High Temperature (HPHT) growth process. Indications of post-growth treatment.