



ELECTRONIC COPY

LG739524336
Report verification at igi.org



October 11, 2025

IGI Report Number **LG739524336**

Description **LABORATORY GROWN DIAMOND**

Shape and Cutting Style **ROUND BRILLIANT**

Measurements **6.45 - 6.47 X 3.83 MM**

GRADING RESULTS

Carat Weight **1.00 CARAT**

Color Grade **FANCY VIVID BLUE**

Clarity Grade **VVS 2**

Cut Grade **EXCELLENT**

October 11, 2025
IGI Report Number **LG739524336**
Description **LABORATORY GROWN DIAMOND**
Shape and Cutting Style **ROUND BRILLIANT**
Measurements **6.45 - 6.47 X 3.83 MM**

GRADING RESULTS

Carat Weight **1.00 CARAT**

Color Grade **FANCY VIVID BLUE**

Clarity Grade **VVS 2**

Cut Grade **EXCELLENT**

ADDITIONAL GRADING INFORMATION

Polish **EXCELLENT**

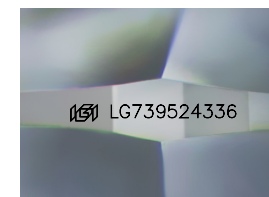
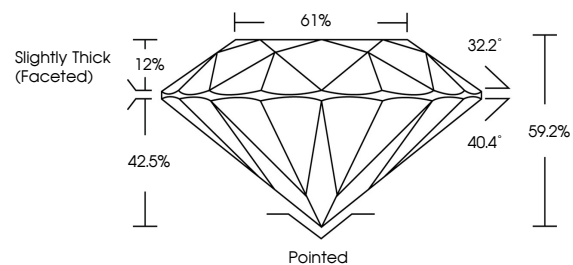
Symmetry **EXCELLENT**

Fluorescence **NONE**

Inscription(s) **LG739524336**

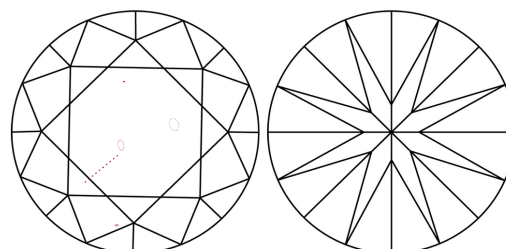
Comments: This Laboratory Grown Diamond was created by Chemical Vapor Deposition (CVD) growth process.
Indications of post-growth treatment.

PROPORTIONS



Sample Image Used

CLARITY CHARACTERISTICS



KEY TO SYMBOLS

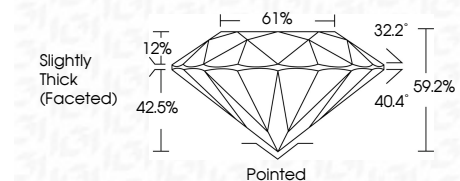
Red symbols indicate internal characteristics.
Green symbols indicate external characteristics.

COLOR

D E F G H I J Faint Very Light Light

CLARITY

| FL | IF | VVS ¹⁻² | VS ¹⁻² | SI ¹⁻² | I ¹⁻³ |
|----------|---------------------|-----------------------------|------------------------|-------------------|------------------|
| Flawless | Internally Flawless | Very Very Slightly Included | Very Slightly Included | Slightly Included | Included |



ADDITIONAL GRADING INFORMATION

Polish **EXCELLENT**

Symmetry **EXCELLENT**

Fluorescence **NONE**

Inscription(s) **LG739524336**

Comments: This Laboratory Grown Diamond was created by Chemical Vapor Deposition (CVD) growth process.
Indications of post-growth treatment.



IGI



October 11, 2025
IGI Report No LG739524336
ROUND BRILLIANT

6.45 - 6.47 X 3.83 MM

1.00 CARAT
FANCY VIVID BLUE
VVS 2
EXCELLENT
EXCELLENT
EXCELLENT
NONE
None

Pointed
EXCELLENT
EXCELLENT
NONE
None

Comments: This Laboratory Grown Diamond was created by Chemical Vapor Deposition (CVD) growth process.
Indications of post-growth treatment.