



**ELECTRONIC COPY**

LG739524134  
Report verification at igi.org



October 8, 2025

IGI Report Number **LG739524134**

Description **LABORATORY GROWN DIAMOND**

Shape and Cutting Style **ROUND BRILLIANT**

Measurements **8.77 - 8.83 X 5.33 MM**

**GRADING RESULTS**

Carat Weight **2.55 CARATS**

Color Grade **E**

Clarity Grade **VS 2**

Cut Grade **IDEAL**

October 8, 2025  
IGI Report Number **LG739524134**  
Description **LABORATORY GROWN DIAMOND**  
Shape and Cutting Style **ROUND BRILLIANT**  
Measurements **8.77 - 8.83 X 5.33 MM**

**GRADING RESULTS**

Carat Weight **2.55 CARATS**

Color Grade **E**

Clarity Grade **VS 2**

Cut Grade **IDEAL**

**ADDITIONAL GRADING INFORMATION**

Polish **EXCELLENT**

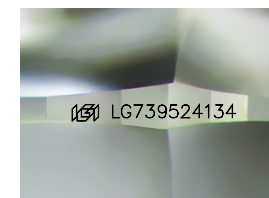
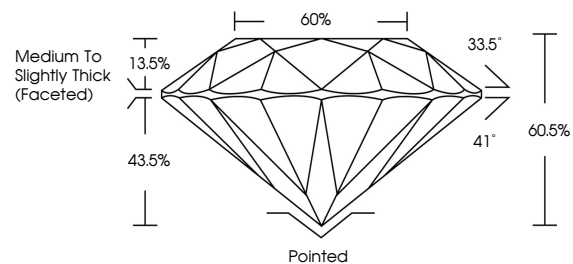
Symmetry **EXCELLENT**

Fluorescence **NONE**

Inscription(s) **LG739524134**

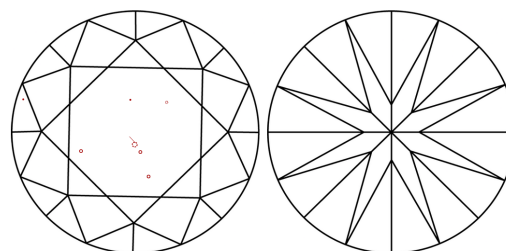
Comments: This Laboratory Grown Diamond was created by Chemical Vapor Deposition (CVD) growth process.  
Type IIa

**PROPORTIONS**



Sample Image Used

**CLARITY CHARACTERISTICS**



**KEY TO SYMBOLS**

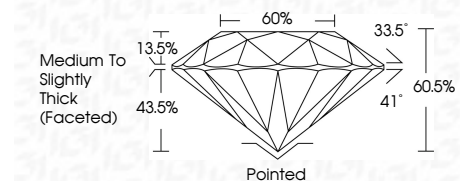
Red symbols indicate internal characteristics.  
Green symbols indicate external characteristics.

**COLOR**

D E F G H I J Faint Very Light Light

**CLARITY**

FL	IF	VS <sup>1-2</sup>	VS <sup>1-2</sup>	SI <sup>1-2</sup>	I <sup>1-3</sup>
Flawless	Internally Flawless	Very Very Slightly Included	Very Slightly Included	Slightly Included	Included



**ADDITIONAL GRADING INFORMATION**

Polish **EXCELLENT**

Symmetry **EXCELLENT**

Fluorescence **NONE**

Inscription(s) **LG739524134**

Comments: This Laboratory Grown Diamond was created by Chemical Vapor Deposition (CVD) growth process.  
Type IIa



**IGI**



October 8, 2025  
IGI Report No **LG739524134**  
**ROUND BRILLIANT**  
**8.77 - 8.83 X 5.33 MM**  
Carat Weight **2.55 CARATS**  
Color Grade **E**  
Clarity Grade **VS 2**  
Cut Grade **IDEAL**  
Depth **60.5%**  
Table **60%**  
Girdle **Medium To Slightly Thick (Faceted)**  
Culet **Pointed**  
Polish **EXCELLENT**  
Symmetry **EXCELLENT**  
Fluorescence **NONE**  
Inscription(s) **LG739524134**  
Comments: This Laboratory Grown Diamond was created by Chemical Vapor Deposition (CVD) growth process.  
Type IIa