



**ELECTRONIC COPY**

## LABORATORY GROWN DIAMOND REPORT

October 7, 2025	
IGI Report Number	LG739523938
Description	LABORATORY GROWN DIAMOND
Shape and Cutting Style	ROUND BRILLIANT
Measurements	8.16 - 8.20 X 4.92 MM

## GRADING RESULTS

Carat Weight	2.03 CARATS
Color Grade	F
Clarity Grade	VS 2
Cut Grade	IDEAL

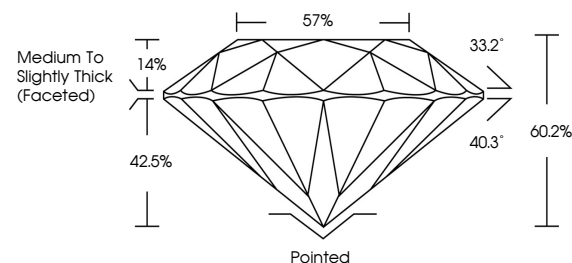
### ADDITIONAL GRADING INFORMATION

Polish	EXCELLENT
Symmetry	EXCELLENT
Fluorescence	NONE
Inscription(s)	151 LG739523938

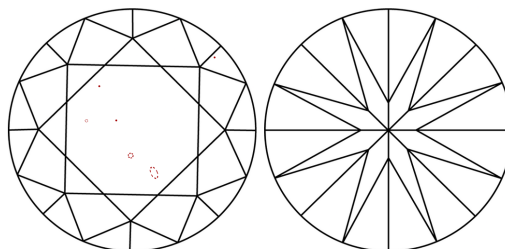
Comments: This Laboratory Grown Diamond was created by Chemical Vapor Deposition (CVD) growth process.  
Type IIa

LG739523938  
Report verification at [igi.org](https://igi.org)

## PROPORTIONS

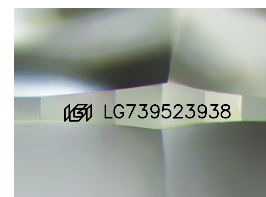


## CLARITY CHARACTERISTICS



## KEY TO SYMBOLS

Red symbols indicate internal characteristics.  
Green symbols indicate external characteristics.



Sample Image Used

## COLOR

D E F G H I J Faint Very Light Light

## CLARITY

FL	IF	VVS <sup>1-2</sup>	VS <sup>1-2</sup>	SI <sup>1-2</sup>	I <sup>1-3</sup>
Flawless	Internally Flawless	Very Very Slightly Included	Very Slightly Included	Slightly Included	Included

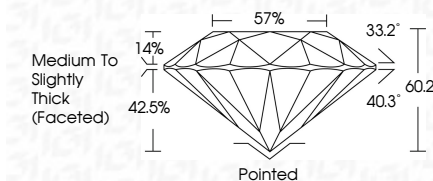
## LABORATORY GROWN DIAMOND REPORT



October 7, 2025	
IGI Report Number	LG739523938
Description	LABORATORY GROWN DIAMOND
Shape and Cutting Style	ROUND BRILLIANT
Measurements	8.16 - 8.20 X 4.92 MM

## GRADING RESULTS

Carat Weight	2.03 CARATS
Color Grade	F
Clarity Grade	VS 2
Cut Grade	IDEAL



### ADDITIONAL GRADING INFORMATION

Polish	EXCELLENT
Symmetry	EXCELLENT
Fluorescence	NONE
Inscription(s)	<del>IGI</del> LG739523938
Comments: This Laboratory Grown Diamond was created by Chemical Vapor Deposition (CVD) growth process.	
Type IIa	



© IGI 2020, International Gemological Institute

FD - 10 20



THIS DOCUMENT WAS PRODUCED WITH THE FOLLOWING SECURITY MEASURES: SPECIAL DOCUMENT PAPER, INK SCREENS, WATERMARK, BACKGROUND DESIGNS, HOLOGRAM AND OTHER SECURITY FEATURES NOT LISTED AND DO EXCEED DOCUMENT SECURITY INDUSTRY GUIDELINE

**www.igi.org**

October 7, 2025	2.03 CARATS
GI Report No. LG759623938	F
ROUND BRILLIANT	VS 2
	IDEAL
	60.2%
	57%
	Medium to Slightly Thick (Faceted)
	Polished
	EXCELLENT
	NONE
	1651 LG759623938
Comments:	
Chemically Grown Diamond was	
identified by Chemical Vapor Deposition	
CVD growth process.	
Type IIA	