



ELECTRONIC COPY

LABORATORY GROWN DIAMOND REPORT

LG739521242
Report verification at igi.org

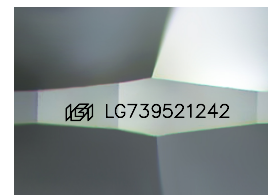
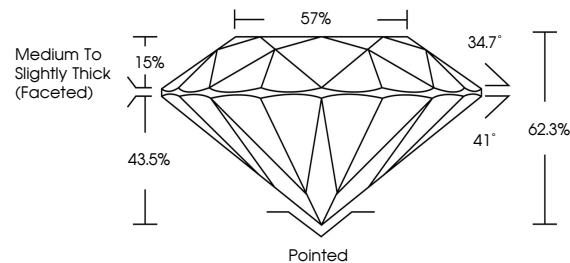
October 2, 2025	
IGI Report Number	LG739521242
Description	LABORATORY GROWN DIAMOND
Shape and Cutting Style	ROUND BRILLIANT
Measurements	8.83 - 8.86 X 5.51 MM
GRADING RESULTS	
Carat Weight	2.66 CARATS
Color Grade	E
Clarity Grade	VVS 2
Cut Grade	IDEAL

ADDITIONAL GRADING INFORMATION

Polish	EXCELLENT
Symmetry	EXCELLENT
Fluorescence	NONE
Inscription(s)	 LG739521242

Comments: This Laboratory Grown Diamond was created by Chemical Vapor Deposition (CVD) growth process.
Type IIa

PROPORTIONS



Sample Image Used

COLOR

D E F G H I J Faint Very Light Light

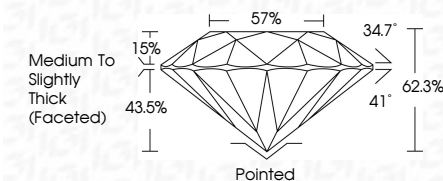
CLARITY

FL	IF	VVS ¹⁻²	VS ¹⁻²	SI ¹⁻²	I ¹⁻³
Flawless	Internally Flawless	Very Very Slightly Included	Very Slightly Included	Slightly Included	Included

LABORATORY GROWN DIAMOND REPORT



October 2, 2025	
IGI Report Number	LG739521242
Description	LABORATORY GROWN DIAMOND
Shape and Cutting Style	ROUND BRILLIANT
Measurements	8.83 - 8.86 X 5.51 MM
GRADING RESULTS	
Carat Weight	2.66 CARATS
Color Grade	E
Clarity Grade	VVS 2
Cut Grade	IDEAL



ADDITIONAL GRADING INFORMATION

Polish	EXCELLENT
Symmetry	EXCELLENT
Fluorescence	NONE
Inscription(s)	 LG739521242
<p>Comments: This Laboratory Grown Diamond was created by Chemical Vapor Deposition (CVD) growth process.</p> <p>Type IIa</p>	



© IGI 2020, International Gemological Institute

FD - 10 20

www.igi.org



THIS DOCUMENT WAS PRODUCED WITH THE FOLLOWING SECURITY MEASURES: SPECIAL DOCUMENT PAPER, INK SCREENS, WATERMARK, BACKGROUND DESIGNS, HOLOGRAM AND OTHER SECURITY FEATURES NOT LISTED AND DO EXCEED DOCUMENT SECURITY INDUSTRY GUIDELINE

October 2, 2025
GI Report No LG739521242
ROUND BRILLIANT

Color	8.83 - 8.86 X 5.51 MM	2.66 CARATS
Carat Weight		
Color Grade	Color Grade	
Clarity Grade	Clarity Grade	VVS 2
Cut Grade	Cut Grade	IDPAL
Depth	Depth	62.9%
Table	Table	57%
Grade	Grade	Medium to Slightly Thick (Faceted)
Culet	Culet	Pointed
Polish	Polish	EXCELLENT
Symmetry	Symmetry	EXCELLENT
Fluorescence	Fluorescence	NONE

Comments:
This Laboratory Grown Diamond was created by Chemical Vapor Deposition (CVD) growth process.